

## 10-9555: Recombinant Rabbit Monoclonal Antibody to Trimethylated Histone H3 Lysine 27, H3K27me3 (Clone: RM175)(Discontinued)

<b>Clonality :</b>	Monoclonal
<b>Clone Name :</b>	RM175
<b>Application :</b>	WB,ELISA,Multiplex,IHC
<b>Reactivity :</b>	All Species
<b>Gene :</b>	H3F3A
<b>Gene ID :</b>	3020
<b>Uniprot ID :</b>	P84243
<b>Format :</b>	Purified
<b>Alternative Name :</b>	Histone H3.3
<b>Isotype :</b>	Rabbit IgG
<b>Immunogen Information :</b>	A trimethyl-peptide corresponding to Trimethyl-Histone H3 (Lys27)

### Product Info

<b>Amount :</b>	100 µg
<b>Purification :</b>	Protein A affinity purified from an animal origin-free culture supernatant
<b>Content :</b>	1 mg/ml in 50% Glycerol/PBS with 1% BSA and 0.09% sodium azide
<b>Storage condition :</b>	Store at -20°C. Avoid repeated freeze and thaw cycles.

### Application Note

Clone RM175 reacts to Histone H3 trimethylated at Lysine 27 (K27me3). No cross reactivity non-modified Lysine 27, monomethylated Lysine 27 (K27me1) or dimethylated Lysine 27 (K27me2), or other methylations in histone H3. Western Blot: 1 Åµg/ml Å²Å² 2 Å²Åµg/ml; IHC: 0.5 Å²Åµg/ml Å²Å² 2 Å²Åµg/ml; ELISA: 0.5 Å²Åµg/ml - 1 Å²Åµg/ml; Multiplex: 0.1 Å²Åµg/ml Å²Å² 0.5 Å²Åµg/ml.

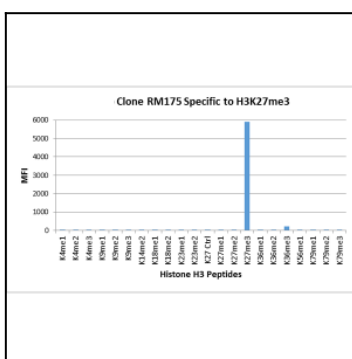


Figure 1: Clone: RM175 specifically reacts to Histone H3 trimethylated at Lysine 27 (K27me3). No cross reactivity with non-modified Lysine 27 (K27 Ctrl), monomethylated Lysine 27 (K27me1) or dimethylated Lysine 27 (K27me2), or other methylations in Histone H3.

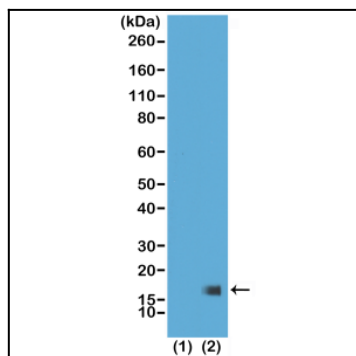


Figure 2: Western Blot of recombinant histone H3.3 (1) and acid extracts of HeLa cells (2), using Clone: RM175 at 1  $\mu\text{g/ml}$ , showed a band of histone H3 trimethyl-ated at Lysine 27 (K27me3) in HeLa cells.

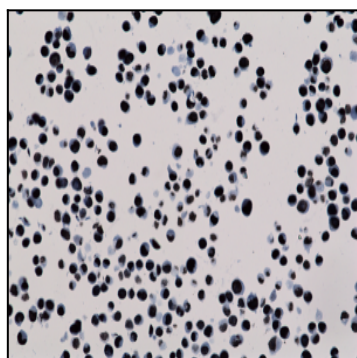


Figure 3: Immunohistochemistry staining of HepG2 cells using Anti-Trimethyl-Histone H3 (Lys27) antibody, Clone: RM175.