

## 10-9544: Recombinant Rabbit Monoclonal Antibody to Trimethylated Histone H3 Lysine 36, H3K36me3 (Clone: RM155)(Discontinued)

<b>Clonality :</b>	Monoclonal
<b>Clone Name :</b>	RM155
<b>Application :</b>	WB,ELISA,Multiplex,ChIP
<b>Reactivity :</b>	All Species
<b>Gene :</b>	H3F3A
<b>Gene ID :</b>	3020
<b>Uniprot ID :</b>	P84243
<b>Format :</b>	Purified
<b>Alternative Name :</b>	Histone H3.3
<b>Isotype :</b>	Rabbit IgG
<b>Immunogen Information :</b>	A trimethyl-peptide corresponding to trimethyl-Histone H3 (Lys36).

### Product Info

<b>Amount :</b>	100 µg
<b>Purification :</b>	Protein A affinity purified from an animal origin-free culture supernatant
<b>Content :</b>	1 mg/ml in 50% Glycerol/PBS with 1% BSA and 0.09% sodium azide
<b>Storage condition :</b>	Store at -20°C. Avoid repeated freeze and thaw cycles.

### Application Note

Clone RM155 reacts to Histone H3 trimethylated at Lysine 36 (K36me3). No cross reactivity with monomethylated Lysine 36 (K36me1), dimethylated Lysine 36 (K36me2), or other methylations in histone H3. Western Blot: 0.5 µg/ml - 2 µg/ml; ChIP: 2 µg/ml- 10 µg/ml; ELISA: 0.2 µg/ml - 1 µg/ml; Multiplex: 0.1 µg/ml - 0.5 µg/ml.

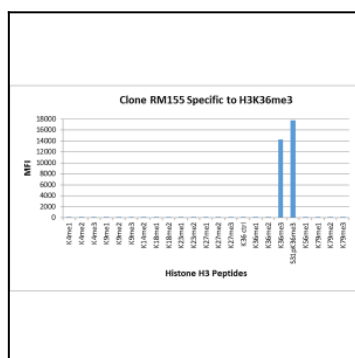


Figure 1: Clone: RM155 specifically reacts to Histone H3 trimethylated at Lysine 36 (K36me3). No cross reactivity with non- modified Lysine 36 (K36 Ctrl), monomethylated Lysine 36 (K36me1) or dimethylated Lysine 36 (K36me2), or other methylations in Histone H3.

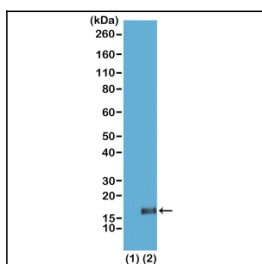


Figure 2: Western Blot of recombinant histone H3.3 (1) and acid extracts of HeLa cells (2), using Clone: RM155 at 2.0 µg/ml, showed a band of histone H3 trimethylated at Lysine 36 (K36me3) in HeLa cells.

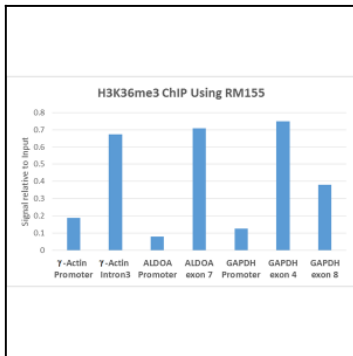


Figure 3: ChIP performed on HeLa cells using H3K36me3 antibody (Clone: RM155, 5ug). Real-time PCR was performed using primers specific to the gene indicated.