

10-9543: Recombinant Rabbit Monoclonal Antibody to Dimethylated Histone H3 Lysine 36, H3K36me2 (Clone: RM141)(Discontinued)

Clonality :	Monoclonal
Clone Name :	RM141
Application :	WB,ELISA,Multiplex
Reactivity :	All Species
Gene :	H3F3A
Gene ID :	3020
Uniprot ID :	P84243
Format :	Purified
Alternative Name :	Histone H3.3
Isotype :	Rabbit IgG
Immunogen Information :	A dimethyl-peptide corresponding to Dimethyl-Histone H3 (Lys36).

Product Info

Amount :	100 µg
Purification :	Protein A affinity purified from an animal origin-free culture supernatant
Content :	1 mg/ml in 50% Glycerol/PBS with 1% BSA and 0.09% sodium azide
Storage condition :	Store at -20°C. Avoid repeated freeze and thaw cycles.

Application Note

Clone RM141 reacts to Histone H3 dimethylated at Lysine 36 (K36me2). No cross reactivity with monomethylated Lysine 36 (K36me1), trimethylated Lysine 36 (K36me3), or other methylations in histone H3. Western Blot: 0.5 µg/ml - 2 µg/ml; ELISA: 0.2 µg/ml - 1 µg/ml; Multiplex: 0.1 µg/ml - 0.5 µg/ml.

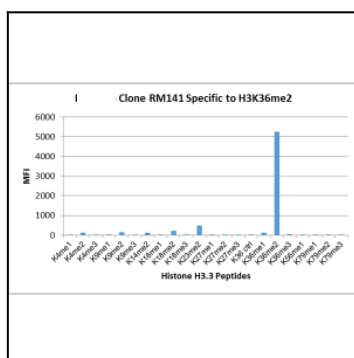


Figure 1: Clone: RM141 specifically reacts to Histone H3 dimethylated at Lysine 36 (K36me2). No cross reactivity with non-modified Lysine 36 (K36 Ctrl), monomethylated Lysine 36 (K36me1), trimethylated Lysine 36 (K36me3), or other methylations in Histone H3.

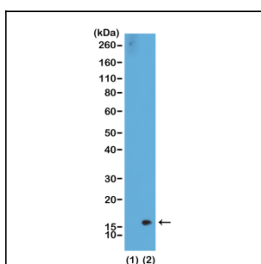


Figure 2: Western Blot of recombinant histone H3.3 (1) and acid extracts of HeLa cells (2), using Clone: RM141 at 0.5 µg/ml, showed a band of histone H3 dimethylated at Lysine 36 (K36me2) in HeLa cells.