

10-9542: Recombinant Rabbit Monoclonal Antibody to Trimethylated Histone H3 Lysine 4, H3K4me3 (Clone: RM137)(Discontinued)

| | |
|--------------------------------|--|
| Clonality : | Monoclonal |
| Clone Name : | RM137 |
| Application : | WB,ELISA,Multiplex |
| Reactivity : | All Species |
| Gene : | H3F3A |
| Gene ID : | 3020 |
| Uniprot ID : | P84243 |
| Format : | Purified |
| Alternative Name : | Histone H3.3 |
| Isotype : | Rabbit IgG |
| Immunogen Information : | A trimethyl-peptide corresponding to Trimethyl-Histone H3 (Lys4) |

Product Info

| | |
|----------------------------|--|
| Amount : | 100 µg |
| Purification : | Protein A affinity purified from an animal origin-free culture supernatant |
| Content : | 1 mg/ml in 50% Glycerol/PBS with 1% BSA and 0.09% sodium azide |
| Storage condition : | Store at -20°C. Avoid repeated freeze and thaw cycles. |

Application Note

Clone RM137 reacts to Histone H3 trimethylated at Lysine 4 (K4me3). No cross reactivity with monomethylated Lysine 4 (K4me1), dimethylated Lysine 4 (K4me2), or other methylations in histone H3. Western Blot: 0.2 µg/ml ~ 1 µg/ml; ELISA: 0.1 µg/ml ~ 0.5 µg/ml; Multiplex: 0.1 µg/ml ~ 0.5 µg/ml.

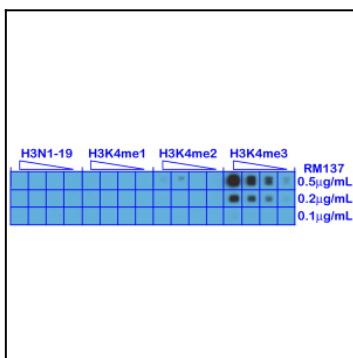


Figure 1: A Peptide dotblot shows Clone: RM137 reacts only to Histone H3 trimethyl-Lysine 4 (K4me3). No cross reactivity with nonmodified Lysine 4 (H3N1-19), monomethylated Lysine 4 (K4me1) or dimethylated Lysine 4 (K4me2).

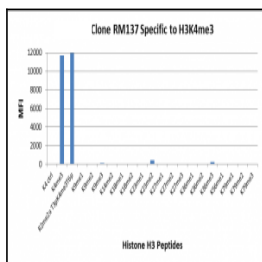


Figure 2: Clone: RM137 specifically reacts to Histone H3 trimethylated at Lysine 4 (K4me3). No cross reactivity with other methylated lysines in Histone H3.

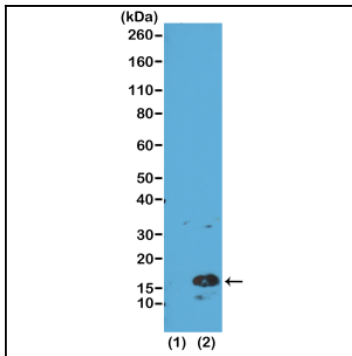


Figure 3: Western Blot of recombinant histone H3.3 (1) and acid extracts of HeLa cells (2), using Clone: RM137 at 0.5 $\mu\text{g/ml}$, showed a band of histone H3 trimethylated at Lysine 4 (K4me3) in HeLa cells.