

## 10-9537-B: Biotinylated Recombinant Rabbit Monoclonal Antibody to Beta -actin (Clone: RM112)(Discontinued)

<b>Clonality :</b>	Monoclonal
<b>Clone Name :</b>	RM112
<b>Application :</b>	IP,ELISA,IHC,FACS,WB
<b>Conjugate :</b>	Biotin
<b>Gene :</b>	ACTB
<b>Gene ID :</b>	60
<b>Uniprot ID :</b>	P60709
<b>Format :</b>	Purified
<b>Alternative Name :</b>	ACTB
<b>Isotype :</b>	Rabbit IgG
<b>Immunogen Information :</b>	A peptide corresponding to the N-terminus of Beta -actin

### Product Info

<b>Amount :</b>	50 $\mu$ l
<b>Purification :</b>	Protein A affinity purified from an animal origin-free culture supernatant
<b>Content :</b>	1 mg/ml in 50% Glycerol/PBS with 1% BSA and 0.09% sodium azide
<b>Storage condition :</b>	Store at -20°C. Avoid repeated freeze and thaw cycles.

### Application Note

Clone RM112 reacts to Alpha-Actin (Actin, cytoplasmic 1). No cross reactivity with other isoform RMs of Actin. Western Blot (WB): 1:1000 dilution; Immunoprecipitation (IP): 1:200 dilution; Chromatin IP (ChIP): 1:200 dilution; Immunocytochemistry (ICC): 1:200 dilution; Immunohistochemistry (IHC): 1:200 dilution.

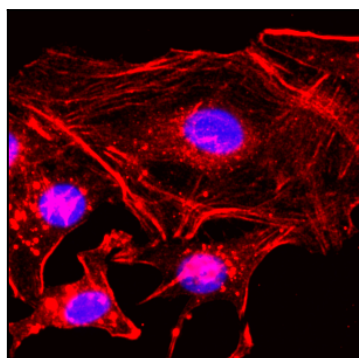


Figure 1: Immunocytochemical staining of HeLa cells, using anti- Beta -Actin Clone: RM112 at 1/200 dilution (red). Nuclei have been labeled with DAPI (blue).

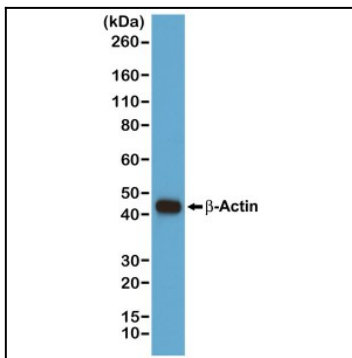


Figure 2: Western blot of A431 cells, using anti- Beta -Actin Clone: RM112 at a 1/1000 dilution, showed a band of Beta -Actin at the predicted MW (42 kDa).