

10-9533: Recombinant Rabbit Monoclonal Antibody to Phosphothreonine (Clone: RM102)(Discontinued)

Clonality :	Monoclonal
Clone Name :	RM102
Application :	WB,IP,ICC,IHC,FACS,ELISA
Reactivity :	All Species
Format :	Purified
Isotype :	Rabbit IgG
Immunogen Information :	Mixture of phosphothreonine-BSA conjugate and a phosphothreonine containing peptide

Product Info

Amount :	100 µg
Purification :	Protein A affinity purified from an animal origin-free culture supernatant
Content :	1 mg/ml in 50% Glycerol/PBS with 1% BSA and 0.09% sodium azide
Storage condition :	Store at -20°C. Avoid repeated freeze and thaw cycles.

Application Note

Clone RM102 reacts threonine-phosphorylated proteins. No cross reactivity with nonphosphorylated threonine, phosphoserine, and phosphotyrosine. It shows slight cross-reactivity with a few phospho-serine-containing peptides. Western Blot (WB): 1:500 -1:2000 dilution; Immunoprecipitation (IP): 1:100-1:500 dilution; Chromatin IP (ChIP): 1:100-1:500 dilution; Immunocytochemistry (ICC): 1:100-1:500 dilution; Immunohistochemistry (IHC): 1:100-1:500 dilution.

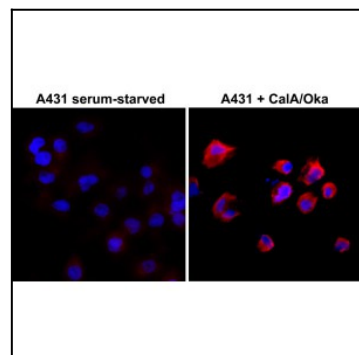


Figure 1: Immunocytochemistry of serum-starved A431 cells nontreated or treated with Calyculin A/Okadaic Acid, using Clone: RM102 at 1/500 dilution (followed by PE conjugated secondary antibody, red) and DAPI (blue).

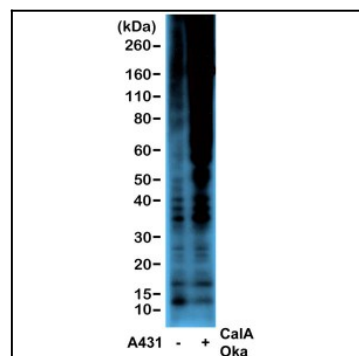


Figure 2: Western blot of serum-starved A431 cells non-treated or treated with Calyculin A/Okadaic Acid, using Clone: RM102 at 1/2000 dilution.

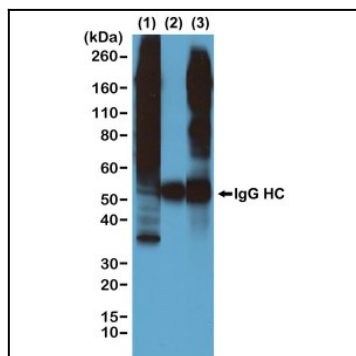


Figure 3: Immunoprecipitation of Calyculin A/Okadaic Acid treated A431 cells by Clone: RM102 at 1/500 dilution, and then blotted with Clone: RM102. (1) Whole lysate control; (2) IP by rabbit IgG control; (3) IP by Clone: RM102.

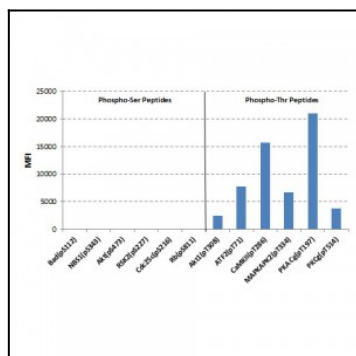


Figure 4: rabbit monoclonal antibody Clone: RM102 recognizes Phosphorylated threonine in peptides with different sequences. It has minimal cross-reactivity with phosphorylated serine.