

10-9518-B: Biotinylated Recombinant Rabbit Monoclonal Antibody to Human Kappa light chain (Clone: RM126)(Discontinued)

Clonality :	Monoclonal
Clone Name :	RM126
Application :	ICC,IHC,FACS,ELISA
Reactivity :	Human
Conjugate :	Biotin
Gene :	IGKC
Gene ID :	3514
Uniprot ID :	P01834
Format :	Purified
Alternative Name :	IGKC
Isotype :	Rabbit IgG
Immunogen Information :	Human IgG

Product Info

Amount :	50 µg
Purification :	Protein A affinity purified from an animal origin-free culture supernatant
Content :	1 mg/ml in 50% Glycerol/PBS with 1% BSA and 0.09% sodium azide
Storage condition :	Store at -20°C. Avoid repeated freeze and thaw cycles.

Application Note

Clone RM126 reacts to the kappa light chain of human immunoglobulins. No cross reactivity with the lambda light chain, mouse IgG, rat IgG, or goat IgG. ELISA: 0.05 µg/ml ~ 0.2 µg/ml; Immunocytochemistry (ICC): 0.5 µg/ml-2 µg/ml; Immunohistochemistry (IHC): 0.5 µg/ml-2 µg/ml.

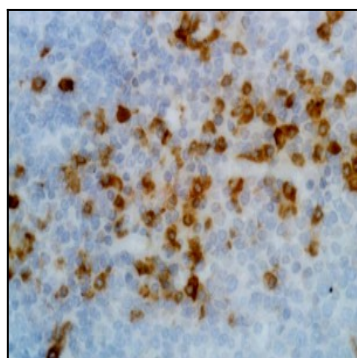


Figure 1: Immunohistochemistry of Human Tonsil using Anti- Kappa Light Chain antibody Clone: RM126.

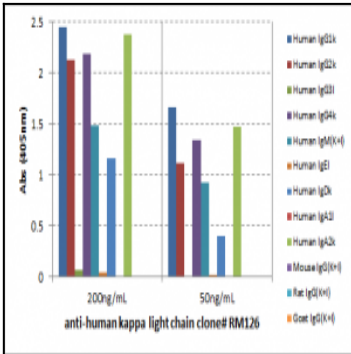


Figure 2: ELISA of human immunoglobulins shows Clone: RM126 reacts to the Kappa light chain of human immuno-globulins. No cross reactivity with the Lambda light chain, mouse IgG, rat IgG, or goat IgG. The plate was coated with 50 ng/well of different immuno-globulins. 200 ng/mL or 50 ng/mL of Clone: RM126 was used as the primary antibody. An alkaline phos-phatase conjugated anti-rabbit IgG as the secondary antibody.

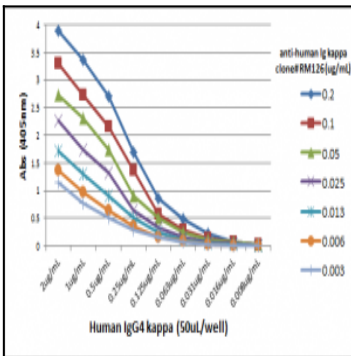


Figure 3: A titer ELISA using Clone: RM126. The plate was coated with different amounts of human IgG4 Kappa . A serial dilution of Clone: RM126 was used as the primary antibody. An alkaline phosphatase conjugated anti-rabbit IgG as the secondary antibody.