

## 10-9509-B: Biotinylated Recombinant Rabbit Monoclonal Antibody to Mouse IgA (Clone: RM220)(Discontinued)

|                                |                          |
|--------------------------------|--------------------------|
| <b>Clonality :</b>             | Monoclonal               |
| <b>Clone Name :</b>            | RM220                    |
| <b>Application :</b>           | IP,ICC,ELISA,IHC,FACS,WB |
| <b>Reactivity :</b>            | Mouse                    |
| <b>Conjugate :</b>             | Biotin                   |
| <b>Gene ID :</b>               | 238447                   |
| <b>Uniprot ID :</b>            | P01878                   |
| <b>Format :</b>                | Purified                 |
| <b>Isotype :</b>               | Rabbit IgG               |
| <b>Immunogen Information :</b> | Mouse IgA                |

### Product Info

|                            |  |
|----------------------------|--|
| <b>Amount :</b>            | 50 µg  |
| <b>Purification :</b>      | Protein A affinity purified from an animal origin-free culture supernatant |
| <b>Content :</b>           | 1 mg/ml in 50% Glycerol/PBS with 1% BSA and 0.09% sodium azide             |
| <b>Storage condition :</b> | Store at -20°C. Avoid repeated freeze and thaw cycles.                     |

### Application Note

Clone RM220 specifically reacts to mouse IgA. No cross reactivity with mouse IgG1, IgG2a, IgG2b, IgG2c, IgG3, IgM, IgE, or human IgA. ELISA: 0.005 µg/ml  $\hat{=}$  0.2 µg/ml; Immunocytochemistry (ICC): 0.5 µg/ml-2 µg/ml; Immunohistochemistry (IHC): 0.5 µg/ml-2 µg/ml; Western Blot (WB): 0.5 µg/ml-2 µg/ml.

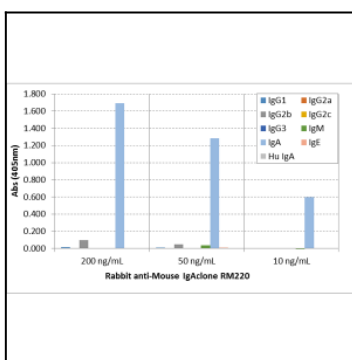


Figure 1: ELISA of mouse immunoglobulins shows Clone: RM220 reactsto mouse IgA. No cross reactivity with mouse IgG1, IgG2a,IgG2b, IgG2c, IgG3, IgM, IgE, or human IgA. The plate was coated with 50 ng/well of different immunoglobulins. 200 ng/ml, 50 ng/ml, or 10 ng/ml of Clone: RM220 was used as the primary antibody. An alkaline phosphatase conjugated anti-rabbit IgG as the secondary antibody.

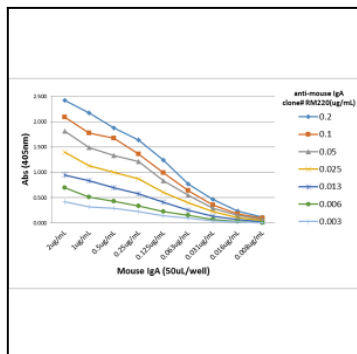


Figure 2: A titer ELISA of mouse IgA. The plate was coated with different amount of mouse IgA. A serial dilution of Clone: RM220 was used as the primary antibody. An alkaline phosphatase conjugated anti-rabbit IgG as the secondary antibody.

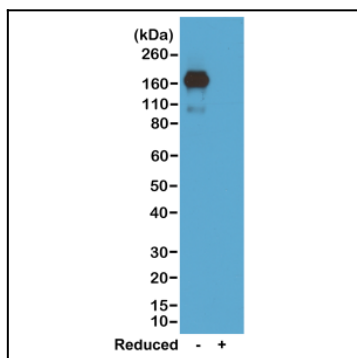


Figure 3: Western blot of nonreduced(-) and reduced(+) mouse IgA, using 0.5 µg/ml of Clone: RM220. This antibody reacts to nonreduced IgA.