

## 10-9502-B: Biotinylated Recombinant Rabbit Monoclonal Antibody to Mouse Ig Kappa Light Chain (Clone: RM103)(Discontinued)

<b>Clonality :</b>	Monoclonal
<b>Clone Name :</b>	RM103
<b>Application :</b>	WB,IP,ICC,IHC,FACS,ELISA
<b>Reactivity :</b>	Mouse
<b>Conjugate :</b>	Biotin
<b>Gene :</b>	Igkc
<b>Gene ID :</b>	16071
<b>Uniprot ID :</b>	P01837
<b>Format :</b>	Purified
<b>Isotype :</b>	Rabbit IgG
<b>Immunogen Information :</b>	Mouse IgG

### Product Info

<b>Amount :</b>	50 µg
<b>Purification :</b>	Protein A affinity purified from an animal origin-free culture supernatant
<b>Content :</b>	1 mg/ml in 50% Glycerol/PBS with 1% BSA and 0.09% sodium azide
<b>Storage condition :</b>	Store at -20°C. Avoid repeated freeze and thaw cycles.

### Application Note

This antibody reacts to the kappa light chain of mouse immunoglobulins. No cross reactivity with the lamda light chain, human IgG, rat IgG, or goat IgG. The Fc region of Clone RM103 has been engineered to eliminate Fc receptor binding. ELISA: 0.005 Åµg/ml-0.2 Åµg/ml; Immunocytochemistry (ICC): 0.5 Åµg/ml-2 Åµg/ml; Immunohistochemistry (IHC): 0.5 Åµg/ml-2 Åµg/ml; Western Blot (WB): 0.1 Åµg/ml-0.5 Åµg/ml.

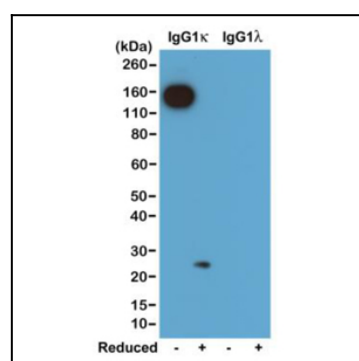


Figure 1: Western blot of nonreduced(-) and reduced(+)mouse IgG1 Kappa and IgG1 Lambda (20 ng/lane), using 0.2 µg/ml of Clone: RM103. This antibody reacts to nonreduced IgG1 Kappa (~150 kDa), and slightly reacts to reduced Kappa light chain (~25 kDa).

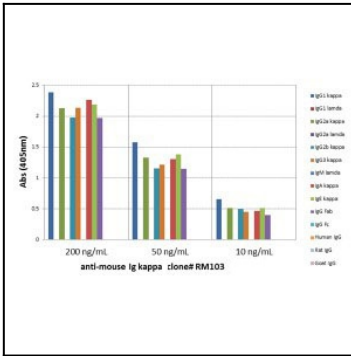


Figure 2: ELISA of mouse immunoglobulins shows Clone: RM103 reacts to the Kappa light chain of mouse immuno-globulins. No cross reactivity with the lamda light chain, human IgG, rat IgG, or goat IgG. The plate was coated with 50 ng/well of different immuno-globulins. 200 ng/mL, 50 ng/mL, or 10 ng/mL of Clone: RM103 was used as the primary antibody. Analkaline phosphatase conjugated anti-rabbit IgG as the secondary antibody.

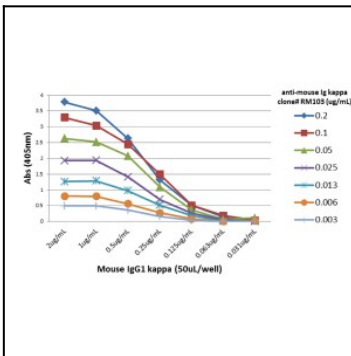


Figure 3: A titer ELISA of mouse IgG1 Kappa . The plate was coated with different amounts of mouse IgG1 Kappa . A serial dilution of Clone: RM103 was used as the primary antibody. An alkaline phosphatase conjugated anti-rabbit IgG as the secondary antibody.