

## 10-3502: Monoclonal Antibody to mouse CD180 (Clone: RP/14)(Discontinued)

<b>Clonality :</b>	Monoclonal
<b>Clone Name :</b>	RP/14
<b>Application :</b>	Functional Assay,FACS
<b>Reactivity :</b>	Mouse
<b>Gene :</b>	Cd180
<b>Gene ID :</b>	17079
<b>Uniprot ID :</b>	Q62192
<b>Format :</b>	Purified
<b>Alternative Name :</b>	CD180 antigen, Lymphocyte antigen 78, Ly-78, Radioprotective 105 kDa protein
<b>Isotype :</b>	Rat IgG2a, Kappa
<b>Immunogen Information :</b>	Mouse CD180

### Description

Radioprotective 105 (RP105, CD180) is a type 1 transmembrane protein of 105 kDa with extracellular leucine-rich repeats (LLRs) and a short cytoplasmic tail. RP105, assigned as CD180, is similar to Drosophila Toll in the extracellular LLRs. Radioprotective 105 (RP105, CD180) expression is largely restricted to immune cells including CD19+ B cells and macrophages. Histological studies showed that RP105 is expressed mainly on mature B cells in mantle zones. Antibody-mediated (RP/14) cross-linking of RP105 induces resistance against irradiation-induced apoptosis, B-cell proliferation, and up-regulation of a costimulatory molecule B7.2, revealing RP105 as a potent regulator of B-cell activation. RP105 (CD180) has an important role in B-cell activation by LPS. It is important to note that RP105 associates with MD1, which is in this context important for RP105 with respect to B-cell surface expression and LPS recognition and signalling. MD-1 seems to be requisite for efficient expression of RP105.

### Product Info

<b>Amount :</b>	500 µg
<b>Purification :</b>	Protein G Chromatography
<b>Content :</b>	0.5 mg, 0.2 µm filtered antibody solution in PBS containing 0.1% BSA
<b>Storage condition :</b>	Store the antibody at 4°C, stable for 6 months. For long-term storage, store at -20°C. Avoid repeated freeze and thaw cycles.

### Application Note

For flow cytometry, dilutions to be used depend on detection system applied. It is recommended that users test the reagent and determine their own optimal dilutions. The typical starting working dilution is 1:50.

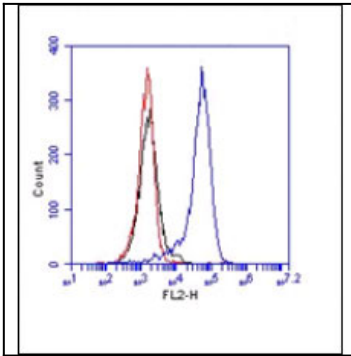


Fig. 1: Flow analysis of CD180 antibody (Clone: RP/14): Cell surface staining of Raw cells, blue represents mouse CD180, red represents Isotope control Rat IgG2a. 1:50 dilution of antibody was used. Goat Anti-Rat PE was used as secondary antibody.