

## 34-1132: Polyclonal Antibody to Visinin-like protein 1

<b>Clonality :</b>	Polyclonal
<b>Application :</b>	WB, IF/ICC, IHC
<b>Reactivity :</b>	Human, Rat, Mouse, Cow, Pig
<b>Gene :</b>	VSNL1
<b>Gene ID :</b>	7447
<b>Uniprot ID :</b>	P62760
<b>Format :</b>	Conc. IgY prep.
<b>Alternative Name :</b>	Hippocalcin-like protein 3
<b>Isotype :</b>	Chicken, IgY
<b>Immunogen Information :</b>	Full length recombinant human VLP1

### Product Info

<b>Amount :</b>	50 µl / 100 µl
<b>Content :</b>	Antibody is supplied as an aliquot of concentrated IgY preparation at about 30 mg/ml total protein.
<b>Storage condition :</b>	Store the antibody at 4°C; stable for 6 months. For long-term storage; store at -20°C. Avoid repeated freeze and thaw cycles.

### Application Note

WB: 1:5,000-10,000. IF/IHC: 1:1,000-2,000 .

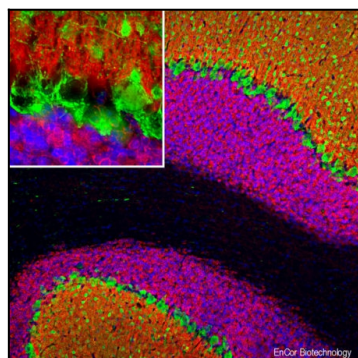


Figure-1: Immunofluorescent analysis of rat brain cerebellum section stained with chicken pAb to VLP, (34-1132), dilution 1:2,000 in red, and costained with mouse mAb to parvalbumin, dilution 1:1,000, in green. Following transcardial perfusion of rat with 4% paraformaldehyde, brain was post fixed for 24 hours, cut to 45 µm, and free-floating sections were stained with above antibodies. The VLP1 antibody reveals the protein expressed in the granule cells membranes and in the neuronal synapses of white matter and molecular layer of the cerebellum, while parvalbumin antibody labels Purkinje cells, basket, stellate, and Golgi cells.

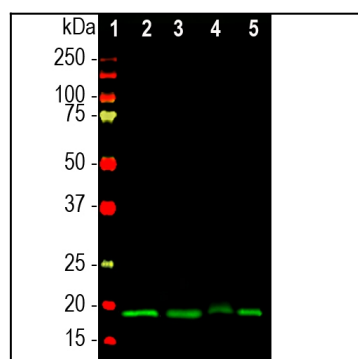


Figure-2: Western blot analysis of different tissue lysates using chicken pAb to visinin-like protein 1 (VLP1), (34-1132), dilution 1:10,000 in green: [1] protein standard (red), [2] rat brain, [3] mouse brain, [4] pig hippocampus, and [5] cow cerebellum. The band at ~20kDa corresponds to the VLP1 protein.