

34-1125: Polyclonal Antibody to Ubiquitin C-terminal hydrolase 1, UCHL1

Clonality :	Polyclonal
Application :	WB, IF/ICC, IHC
Reactivity :	Human, Rat, Mouse, Horse, Cow, Pig, Chicken,
Gene :	UCHL1
Gene ID :	7345
Uniprot ID :	P09936
Format :	Sera
Alternative Name :	Neuron cytoplasmic protein 9.5,PGP9.5,PGP 9.5,Ubiquitin thioesterase L1
Isotype :	Rabbit, IgG
Immunogen Information :	Recombinant full length human UCHL1 purified from E. coli

Product Info

Amount :	50 µl / 100 µl
Content :	Antibody is supplied as an aliquot of serum
Storage condition :	Store the antibody at 4°C; stable for 6 months. For long-term storage; store at -20°C. Avoid repeated freeze and thaw cycles.

Application Note

WB: 1:5,000. IF/ICC and IHC: 1:500

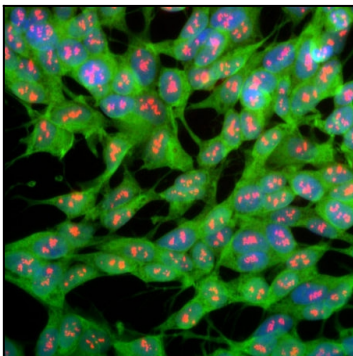


Figure-1: Immunofluorescent analysis of SH-SY5Y cells stained with rabbit pAb to UCHL1,(34-1125), dilution 1:1,000 in green, and costained with mouse mAb to fibrillarin,(34-1031), dilution 1:1,000 in red. The blue is Hoechst staining of nuclear DNA. The UCHL1 antibody produces strong staining of the cellular cytoplasm of these cells which share many properties with neurons, while the (34-1031) antibody specifically labels nucleoli.

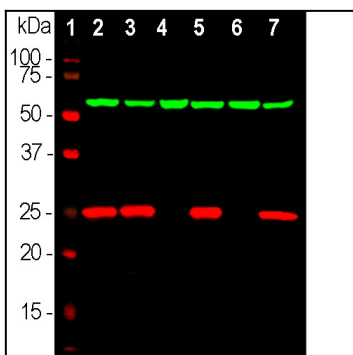


Figure-2: Western blot analysis of different tissue and cell lysates using rabbit pAb to UCHL1,(34-1125), dilution 1:2,000 in red, and mouse mAb to HSP60, dilution 1:10,000, in green: [1] protein standard, [2] rat brain, [3] mouse brain, [4] NIH-3T3, [5] HEK293, [6] HeLa, [7] SH-SY5Y cells. The single band at 24kDa corresponds to the UCHL1 protein, while the 60kDa band represents HSP60 protein. UCHL1 is detectable in CNS extracts and cells with neuronal properties.