

## 34-1120: Monoclonal Antibody to Ubiquitin(Clone: Ubi-1)(Discontinued)

<b>Clonality :</b>	Monoclonal
<b>Clone Name :</b>	Ubi-1
<b>Application :</b>	IHC,WB
<b>Reactivity :</b>	Pig,Rat,Mouse,Human,Bovine
<b>Gene :</b>	UBB, UBC
<b>Gene ID :</b>	7314
<b>Uniprot ID :</b>	P0CG47
<b>Format :</b>	Purified
<b>Isotype :</b>	Mouse, IgG1
<b>Immunogen Information :</b>	Purified ubiquitin conjugated with glutaraldehyde to KLH

### Product Info

<b>Amount :</b>	100 $\mu$ l
<b>Content :</b>	Antibody is supplied as an aliquot of 1 mg/ml of affinity purified antibody or ascites fluid.
<b>Storage condition :</b>	Store the antibody at 4°C; stable for 6 months. For long-term storage; store at -20°C. Avoid repeated freeze and thaw cycles.

### Application Note

Western blot: 1:1,000. IF/ICC and IHC: 1:1,000.

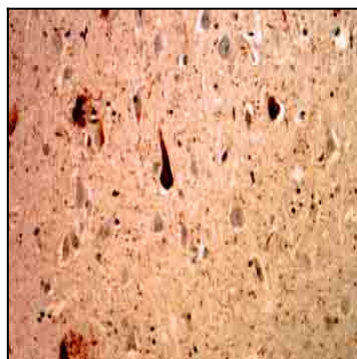


Figure 1: 34-1120 staining of cerebral cortex of an Alzheimer patient. Neurofibrillary tangles and dystrophic neurites associated with senile plaques stain strongly with this antibody. In the center is a typical neurofibrillary tangle containing neuron.

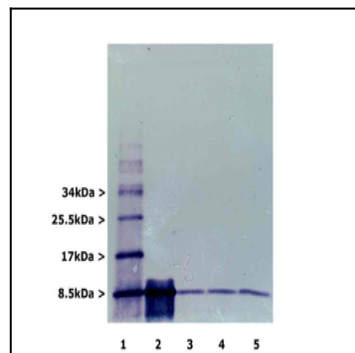


Figure 2: Blots of mono and polyubiquitin (lane 1), monoubiquitin only (2), and 100  $\mu$ g total wet weight of cerebellum , cortex and brain stem respectively (lane 3-5). Material was run out on 20% SDS-PAGE and transferred electrophoretically to PVDF.