

34-1118: Monoclonal Antibody to Ubiquilin 2 (Clone: 6H9)

Clonality :	Monoclonal
Clone Name :	6H9
Application :	WB, IF/ICC, IHC
Reactivity :	Human, Rat, Mouse
Gene :	UBQLN2
Gene ID :	29978
Uniprot ID :	Q9UHD9
Format :	Purified
Alternative Name :	Chap1,DSK2 homolog,PLIC-2,Protein linking IAP with cytoskeleton 2,Ubiquitin-like product Chap1/Dsk2
Isotype :	Mouse, IgG1
Immunogen Information :	Human ubiquilin 2 expressed in and purified from E. coli.

Product Info

Amount :	50 μ l / 100 μ l
Content :	Antibody is supplied as an aliquot of 1 mg/ml of affinity purified antibody.
Storage condition :	Store the antibody at 4°C; stable for 6 months. For long-term storage; store at -20°C. Avoid repeated freeze and thaw cycles.

Application Note

WB: 1:1,000-1:2,000. IF/ICC and IHC: 1:1,000.

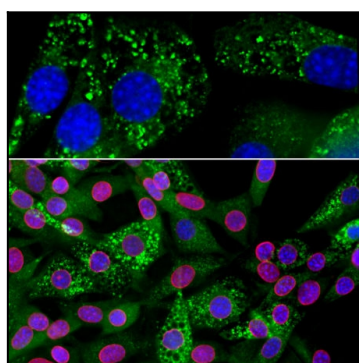


Figure-1: Immunofluorescent analysis of an NIH-3T3 cell culture stained with mouse mAb to ubiquilin 2,(34-1118), dilution 1:1,000 in green, and costained with chicken pAb to lamin A/C, dilution 1:5,000 in red. The blue is DAPI staining of nuclear DNA. The cells were treated with 50 μ M of chloroquine, an inhibitor of autophagy, for 16 hours prior to staining. The (34-1118) antibody reveals punctate staining of ubiquilin 2 protein accumulated in lysosomes in the cytoplasm, while the lamin A/C antibody stains the nuclear lamina.

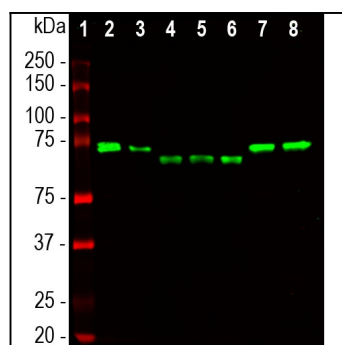


Figure-2: Western blot analysis of different tissue and cell lysates using mouse mAb to ubiquilin 2,(34-1118), dilution 1:1,000 in green: [1] protein standard (red), [2] NIH-3T3, [3] C6, [4] HEK293, [5] HeLa, [6] SH-SY5Y, [7] rat whole brain, and [8] mouse whole brain. The band at 65-70kDa corresponds to ubiquilin 2 protein, which is known to differ between the human and rodent proteins.