

34-1117: Monoclonal Antibody to Beta Tubulin(Clone: 4E4)

Clonality :	Monoclonal
Clone Name :	4E4
Application :	WB
Reactivity :	Human
Gene :	TUBB
Gene ID :	203068
Uniprot ID :	P07437
Format :	Purified
Alternative Name :	Tubulin beta-5 chain
Isotype :	Mouse, IgG2a
Immunogen Information :	Pig brain tubulin

Product Info

Amount :	50 µl / 100 µl
Content :	Antibody is supplied as an aliquot of affinity purified antibody.
Storage condition :	Store the antibody at 4°C; stable for 6 months. For long-term storage; store at -20°C. Avoid repeated freeze and thaw cycles.

Application Note

WB: 1:5,000-1:10,000, ICC/IF and IHC: 1:1000-1:5,000.

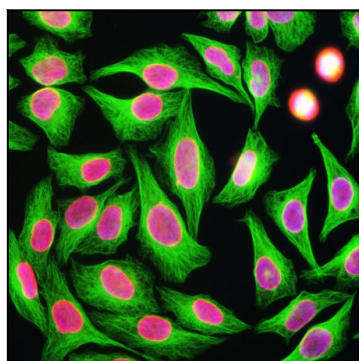


Figure-1: Immunofluorescence analysis of HeLa cells stained with mouse mAb to β^2 -tubulin, (34-1117), dilution 1:5,000 in green, and costained with chicken pAb to lamin A/C, (34-1057), dilution 1:2,000, in red. Blue is DAPI staining of nuclear DNA. (34-1117) antibody produces strong staining of cytoplasmic microtubules, while the lamin A/C antibody specifically labels the nuclear membrane of these cells.

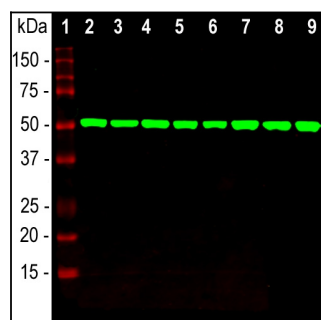


Figure-2: Western blot analysis of equal amounts of cell line and whole brain lysates using mouse mAb to β^2 -tubulin (34-1117), dilution 1:5,000 in green: [1] protein standard (red), [2] HEK293, [3] HeLa, [4] SH-SY5Y, [5] COS-1, [6] NIH-3T3, [7] C6 cells, [8] rat brain, and [9] mouse brain. Strong band at 50 kDa corresponds to the β^2 -tubulin proteins.