

34-1116: Monoclonal Antibody to Beta Tubulin(Clone: 1B12)

Clonality :	Monoclonal
Clone Name :	1B12
Application :	WB
Reactivity :	Human
Gene :	TUBB
Gene ID :	203068
Uniprot ID :	P07437
Format :	Purified
Alternative Name :	Tubulin beta-5 chain
Isotype :	Mouse, IgG2b
Immunogen Information :	Pig brain tubulin preparation

Product Info

Amount :	50 µl / 100 µl
Content :	Antibody is supplied as an aliquot of 1 mg/ml of affinity purified antibody.
Storage condition :	Store the antibody at 4°C; stable for 6 months. For long-term storage; store at -20°C. Avoid repeated freeze and thaw cycles.

Application Note

WB: 1:5,000-1:10,000. IF: 1:5,000.

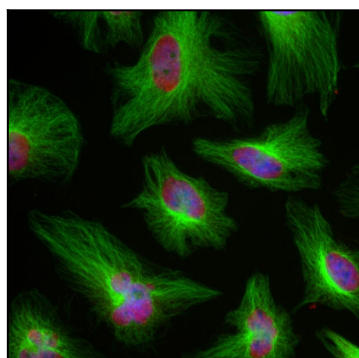


Figure-1: Immunofluorescent analysis of HeLa cells stained with mouse mAb to β^2 -tubulin,(34-1116), dilution 1:5,000 in green, and costained with chicken pAb to the nucleic acid binding protein FOX2, dilution 1:1,000 in red. Blue is DAPI staining of nuclear DNA. (34-1116) antibody produces strong staining of microtubules in the cytoplasm, while the chicken pAb to the nucleic acid binding protein FOX2 antibody labels the nuclei of HeLa cells. Mouse select each image for larger view.

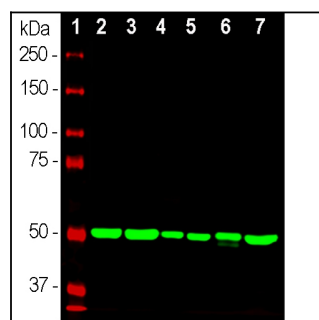


Figure-2: Western blot analysis of whole tissue or cell lysates using mouse mAb to β^2 -tubulin,(34-1116), dilution 1:10,000 in green: [1] protein standard (red), [2] adult rat brain, [3] adult mouse brain, [4] NIH-3T3 cells, [5] HEK293 cells, [6] HeLa cells, [7] SH-SY5Y cells. The strong clean band with apparent SDS-PAGE molecular weight of ~50kDa corresponds to the β^2 -tubulin proteins.