

34-1115: Monoclonal Antibody to TAF-15(Clone: 4D71)

Clonality :	Monoclonal
Clone Name :	4D71
Application :	WB, IF/ICC
Reactivity :	Human, Rat, Mouse
Gene :	TAF15
Gene ID :	8148
Uniprot ID :	Q92804
Format :	Purified
Alternative Name :	68 kDa TATA-binding protein-associated factor, RNA-binding protein 56
Isotype :	Mouse, IgG1
Immunogen Information :	Full length recombinant human TAF15 expressed in and purified from E. coli.

Product Info

Amount :	50 µl / 100 µl
Content :	Antibody is supplied as an aliquot of 1 mg/ml of affinity purified antibody.
Storage condition :	Store the antibody at 4°C; stable for 6 months. For long-term storage; store at -20°C. Avoid repeated freeze and thaw cycles.

Application Note

WB 1:1,000. IF/ICC: 1:500-1:1,000

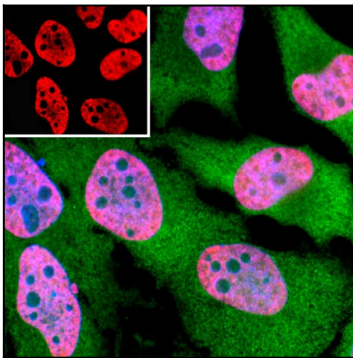


Figure-1: Immunofluorescent analysis of HeLa cells stained with mouse mAb to TATA-box binding protein associated factor 15, TAF15,(34-1115), dilution 1:500 in red, and costained with rabbit pAb to GAPDH,(34-1048), dilution 1:1,000 in green. Blue is Hoechst staining of nuclear DNA. The (34-1115) antibody reveals TAF15 protein expressed exclusively in the nuclei of the cells, while GAPDH antibody produces strong cytoplasmic staining.

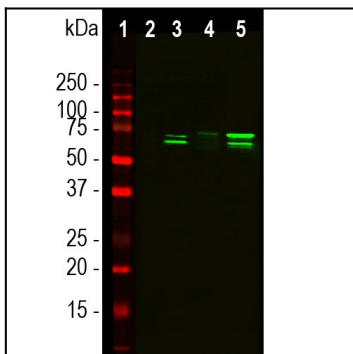


Figure-2: Western blot analysis of cytosol or nuclear enriched fractions of cell line lysates using mouse mAb to TAF15,(34-1115), dilution 1:1,000: [1] protein standard, [2] NIH-3T3 cytosol, [3] NIH-3T3 nuclear fraction, [4] HeLa cytosol, and [5] HeLa nuclear fraction. Double band at 56 and 68kDa detected predominantly in the nuclear enriched fraction corresponds to the TAF15 protein.