

34-1111: Monoclonal Antibody to Alpha-synuclein (Clone: 3H9)(Discontinued)

| | |
|--------------------------------|---|
| Clonality : | Monoclonal |
| Clone Name : | 3H9 |
| Application : | WB,IF/ICC,IHC |
| Reactivity : | Human,Bovine,Pig,Mouse,Rat |
| Gene : | SNCA |
| Gene ID : | 6622 |
| Uniprot ID : | P37840 |
| Format : | Purified |
| Alternative Name : | Non-A beta component of AD amyloid,NACP,Non-A4 component of amyloid precursor |
| Isotype : | Mouse, IgG1 |
| Immunogen Information : | Full length human protein with the epitope from amino acids 61-95 |

Product Info

| | |
|----------------------------|---|
| Amount : | 100 μ l |
| Content : | Antibody is supplied as an aliquot of 1 mg/ml of affinity purified preparation. |
| Storage condition : | Store the antibody at 4°C; stable for 6 months. For long-term storage; store at -20°C. Avoid repeated freeze and thaw cycles. |

Application Note

Western blot:1:1,000 IF/ICC and IHC: 1:1,000

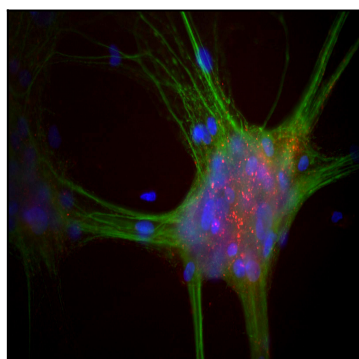


Figure 1: Mixed neuron-glia cultures stained with 34-1111, our monoclonal antibody to alpha-synuclein (red) and chicken polyclonal antibody to MAP2 34-1064 (green). The alpha-synuclein antibody stains vesicular structures the perikarya and processes of the neurons in this image.

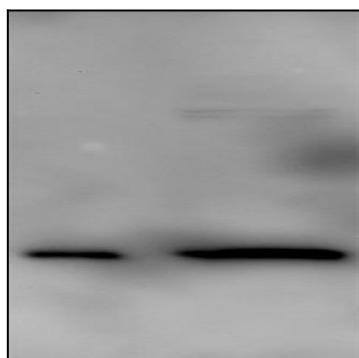


Figure 2: Blots of 34-1111 on recombinant alpha-synuclein (left lane) and crude extract of mouse brain (right lane, courtesy Rogan Tinsley, Howard Florey Institute, University of Melbourne).