

34-1109: Polyclonal Antibody to Alpha-II spectrin (Discontinued)

Clonality :	Polyclonal
Application :	WB,IF/ICC,IHC
Reactivity :	Human,Bovine,Pig,Mouse,Rat
Gene :	SPTAN1
Gene ID :	6709
Uniprot ID :	Q13813
Format :	Sera
Alternative Name :	Alpha-II spectrin,Fodrin alpha chain,Spectrin, non-erythroid alpha subunit
Isotype :	Rabbit, IgG
Immunogen Information :	The antibody was raised against a mix of five recombinant constructs containing the entire C-terminal region of human alpha-II spectrin (amino acids 676-2,400).

Product Info

Amount :	100 µl
Content :	Antibody is supplied as an aliquot of serum.
Storage condition :	Store the antibody at 4°C; stable for 6 months. For long-term storage; store at -20°C. Avoid repeated freeze and thaw cycles.

Application Note

Western blot: 1:5,000-1:10,000. ICC/IF and IHC: 1:500-1:1,000 .

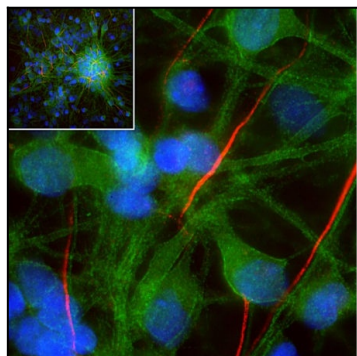


Figure 1: Mixed neuron-glia cultures stained with rabbit antibody to alpha-II spectrin (green) and mouse polyclonal antibody to Nestin (red). The alpha-II spectrin antibody stains numerous axonal and dendritic profiles in these cultures, clearly revealing the submembraneous cytoskeleton. Since alpha-II spectrin is specific for neurons in the CNS, the glial cells in this culture are not recognized by this antibody.

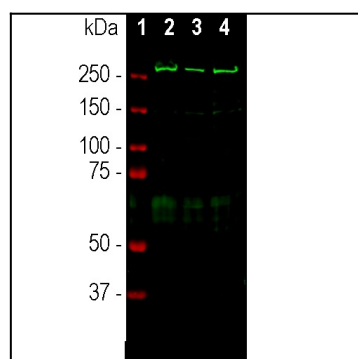


Figure 2: Western blots of mouse sciatic nerve extract (lanes 1 and 2) and brain homogenate (3). A prominent band running at 240kDa represents the intact alpha-II spectrin heavy chain. More minor bands below this likely represent in vivo proteolytic fragments of alpha-II spectrin.