

34-1108: Monoclonal Antibody to Alpha-II spectrin (Clone: 3D7)

Clonality :	Monoclonal
Clone Name :	3D7
Application :	WB, IF/ICC, IHC
Reactivity :	Human, Rat, Mouse
Gene :	SPTAN1
Gene ID :	6709
Uniprot ID :	Q13813
Format :	Purified
Alternative Name :	Alpha-II spectrin, Fodrin alpha chain, Spectrin, non-erythroid alpha subunit
Isotype :	Mouse, IgG1
Immunogen Information :	Recombinant construct containing the 13th, 14th and 15th spectrin repeats of human Alpha -II spectrin (amino acids 1398-1685) expressed in and purified from E. coli.

Product Info

Amount :	50 µl / 100 µl
Content :	Supplied as an aliquot of affinity purified antibody at 1mg/ml in PBS, 50% glycerol, 5mM NaN3
Storage condition :	Store the antibody at 4°C; stable for 6 months. For long-term storage; store at -20°C. Avoid repeated freeze and thaw cycles.

Application Note

WB: 1:3,000. IF/ICC: 1:500.

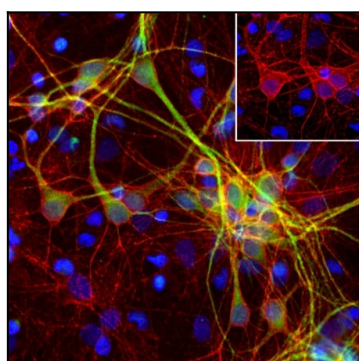


Figure-1: Immunofluorescent analysis of cortical neuron-glia cell culture from E20 rat embryos stained with mouse mAb to α -II-Spectrin,(34-1108), dilution 1:500 in red, and costained with chicken pAb to Microtubule Associated Protein2 (MAP2),(34-1064), dilution 1:10,000 in green. The blue is Hoechst staining of nuclear DNA. The spectrin antibody stains membranes of neuronal cell body, axons and their dendrites, while MAP2 antibody labels dendrites and perikarya of mature neurons only.

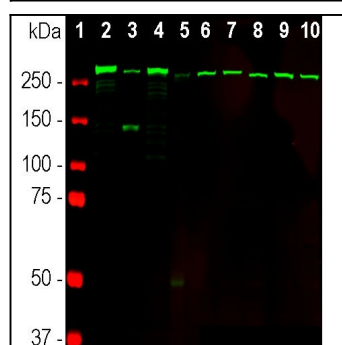


Figure-2: Western blot analysis of different tissue and cell lysates using mouse mAb to α -II-spectrin,(34-1108), dilution 1:2,000 in green: [1] protein standard (in red), [2] rat brain, [3] rat spinal cord, [4] mouse brain, [5] mouse spinal cord, [6] NIH-3T3, [7] HEK293, [8] HeLa, [9] SH-SY5Y, and [10] C6 cells. The prominent band above 250kDa represents the intact α -II-spectrin.