

## 36-1472: Monoclonal Antibody to MUC6 (Mucin 6 / Gastric Mucin)(Clone : CLH5)

<b>Clonality :</b>	Monoclonal
<b>Clone Name :</b>	CLH5
<b>Application :</b>	FACS,IF,IHC
<b>Reactivity :</b>	Human
<b>Gene :</b>	MUC6
<b>Gene ID :</b>	4588
<b>Uniprot ID :</b>	Q6W4X9
<b>Format :</b>	Purified
<b>Alternative Name :</b>	MUC6
<b>Isotype :</b>	Mouse IgG1, kappa
<b>Immunogen Information :</b>	A synthetic peptide of the Gastric Mucin 6 tandem repeat sequence

### Description

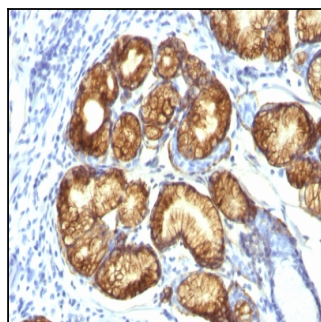
The MUC6 gastric mucin is a secreted glycoprotein that plays an essential role in epithelial cyto-protection from acid, proteases, pathogenic microorganisms, and mechanical trauma in the gastrointestinal tract. Mucin 6 expression is highest in the stomach and gall bladder, with lower expression in the terminal ileum and right colon. In gastric cancer, Mucin 6 has an altered expression. In normal stomach, Mucin 6 is associated with Lewis type 2; Mucin 6 is also expressed in gastric metaplasia, duodenum and pancreas. Mucin 6 is a secretory mucin, located in the deeper mucosal folds of human gall bladder, and its expression is altered with increasing degrees of inflammation.

### Product Info

<b>Amount :</b>	100 µg
<b>Purification :</b>	Affinity Chromatography
<b>Content :</b>	100 µg in 500 µl PBS containing 0.05% BSA and 0.05% sodium azide. Sodium azide is highly toxic.
<b>Storage condition :</b>	Store the antibody at 4°C; stable for 6 months. For long-term storage; store at -20°C. Avoid repeated freeze and thaw cycles.

### Application Note

Flow Cytometry (0.5-1ug/million cells); Immunofluorescence (1-2ug/ml); ,Immunohistochemistry (Formalin-fixed) (1-2ug/ml for 30 minutes at RT),(Staining of formalin-fixed tissues requires heating tissue sections in 10mM Tris with 1mM EDTA, pH 9.0, for 45 min at 95 &degC followed by cooling at RT for 20 minutes),



Formalin-fixed, paraffin-embedded human Gastric Carcinoma stained with MUC6 Monoclonal Antibody (CLH5).