

### 34-1104: Polyclonal Antibody to Pin1(Discontinued)

<b>Clonality :</b>	Polyclonal
<b>Application :</b>	IHC,WB
<b>Reactivity :</b>	Pig,Rat,Mouse,Human,Bovine
<b>Gene :</b>	PIN1
<b>Gene ID :</b>	5300
<b>Uniprot ID :</b>	Q13526
<b>Format :</b>	Conc. IgY prep.
<b>Alternative Name :</b>	Peptidyl-prolyl cis-trans isomerase Pin1, Rotamase Pin1
<b>Isotype :</b>	Chicken, IgY
<b>Immunogen Information :</b>	Recombinant full length Pin-1 purified from E. coli

#### Product Info

<b>Amount :</b>	100 $\mu$ l
<b>Content :</b>	Antibody is supplied as an aliquot of concentrated IgY prep.
<b>Storage condition :</b>	Store the antibody at 4°C; stable for 6 months. For long-term storage; store at -20°C. Avoid repeated freeze and thaw cycles.

#### Application Note

Western blot: 1:20,000. ICC/IF and IHC: 1:2,000.

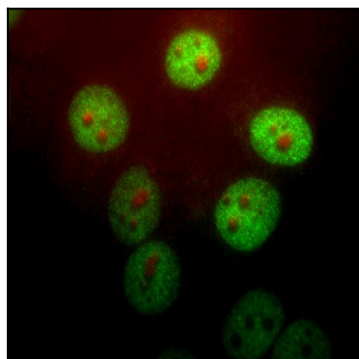


Figure 1: HeLa cells stained with 34-1104 antibody to Pin-1 (1:1,000 dilution, green) and monoclonal to fibrillarin, 34-1031 (red). Pin-1 stains the nuclear matrix and, much more faintly, the cytoplasm. The fibrillarin antibody marks nucleoli.

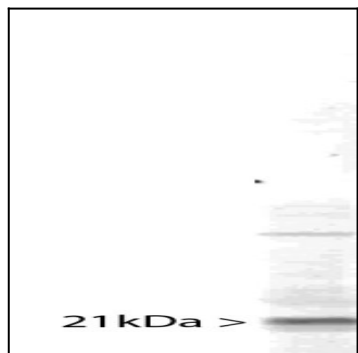


Figure 2: Western blot of whole HeLa cell homogenate stained with 34-1104, at dilution of 1:10,000. A prominent band running with an apparent SDS-PAGE molecular weight of ~21 kDa corresponds to Pin1.