

34-1102: Polyclonal Antibody to Peripherin

Clonality :	Polyclonal
Application :	WB, IF/ICC, IHC
Reactivity :	Human, Rat, Mouse, Pig, Cow
Gene :	PRPH
Gene ID :	5630
Uniprot ID :	P41219
Format :	Sera
Alternative Name :	Neurofilament 4
Isotype :	Rabbit, IgG
Immunogen Information :	Recombinant human peripherin expressed in and purified from E. coli

Product Info

Amount :	50 µl / 100 µl
Content :	Antibody is supplied as an aliquot of serum
Storage condition :	Store the antibody at 4°C; stable for 6 months. For long-term storage; store at -20°C. Avoid repeated freeze and thaw cycles.

Application Note

WB: 1:1,000-1:2,000. IF/ICC and IHC: 1:2,000.

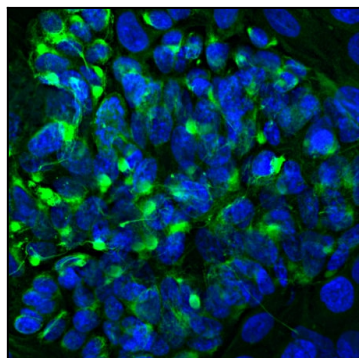


Figure-1: Immunofluorescent analysis of the widely used rat pheochromocytoma PC 12 cell line stained with rabbit polyclonal antibody to peripherin,(34-1102), dilution 1:2,000, in green. The blue is Hoechst staining of nuclear DNA. Peripherin, one of the Class III family of intermediate filament subunit proteins, is a major component of the PC12 cell forming a perinuclear cap, with some filaments visible in the cytoplasm.

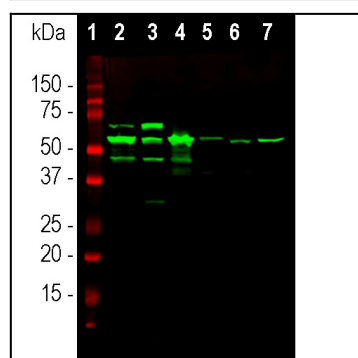


Figure-2: Western blot analysis of tissue and cell lysates using rabbit pAb to peripherin,(34-1102), dilution 1:10,000 in green: [1] protein standard, [2] rat spinal cord, [3] mouse spinal cord, [4] pig spinal cord, [5] cow spinal cord, [6] SH-SY5Y cells and [7] PC12 cells. The major band at ~57kDa corresponds to the major peripherin protein isoform, while other bands presumably represent protein products of alternate transcripts of the peripherin gene.