

34-1099: Polyclonal Antibody to Parvalbumin

Clonality :	Polyclonal
Application :	WB, IF/ICC, IHC
Reactivity :	Human, Rat, Mouse
Gene :	PVALB
Gene ID :	5816
Uniprot ID :	P20472
Format :	Conc. IgY prep.
Isotype :	Chicken, IgY
Immunogen Information :	Full-length recombinant human protein

Product Info

Amount :	50 μ l / 100 μ l
Content :	Antibody is supplied as an IgY prep
Storage condition :	Store the antibody at 4°C; stable for 6 months. For long-term storage; store at -20°C. Avoid repeated freeze and thaw cycles.

Application Note

WB: 1:1,000-1:5,000 IF/ICC or IHC: 1:1,000-1:5,000

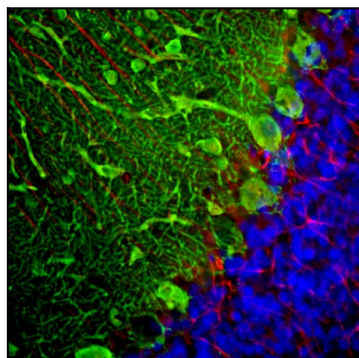


Figure-1: Immunofluorescent analysis of a rat cerebellum section stained with chicken pAb to parvalbumin,(34-1099), dilution 1:2,000, in green, and costained with mouse mAb to GFAP, dilution 1:500, in red. The blue is DAPI staining of nuclear DNA. Following transcardial perfusion of rat with 4% paraformaldehyde, brain was post fixed for 24 hours, cut to 45 μ m, and free floating sections were stained with above antibodies. The(34-1099) antibody labels the perikarya and dendrites of Purkinje cells and interneurons in the molecular layer of the cerebellum. The GFAP antibody stains the processes of Bergmann glia and astrocytes.

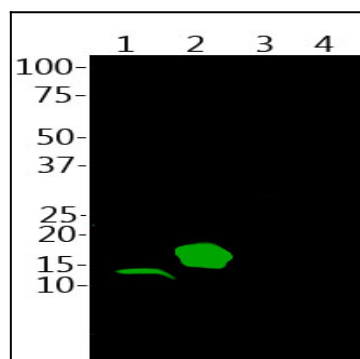


Figure-2: Western blot analysis of skeletal muscle lysates and His-tagged recombinant human proteins using chicken pAb to parvalbumin,(34-1099), dilution 1:2,000, in green: [1] protein standard (red), [2] mouse muscle, [3] recombinant full length human parvalbumin, [4] recombinant full length human calretinin and [5] recombinant full length human calbindin. Band at 12kDa in muscle lysate is native parvalbumin and 18kDa band in the next lane is His-tagged recombinant parvalbumin. The (34-1099) antibody binds parvalbumin strongly but is not cross-reactive with the related calcium binding proteins calretinin and calbindin.