

## 34-1098: Monoclonal Antibody to Pdi1p (Clone: 38H8)

<b>Clonality :</b>	Monoclonal
<b>Clone Name :</b>	38H8
<b>Application :</b>	WB, IF, IP
<b>Reactivity :</b>	Saccharomyces cerevisiae
<b>Uniprot ID :</b>	E7K9Z8
<b>Format :</b>	T.C. Sup.
<b>Isotype :</b>	Mouse, IgG1
<b>Immunogen Information :</b>	Yeast nuclear preparations

### Product Info

<b>Amount :</b>	250 µl / 500 µl
<b>Content :</b>	Antibody is supplied as an aliquot of concentrated tissue culture supernatant.
<b>Storage condition :</b>	Store the antibody at 4°C; stable for 6 months. For long-term storage; store at -20°C. Avoid repeated freeze and thaw cycles.

### Application Note

WB: 1:10,000. IF: 1:500-1:1,000

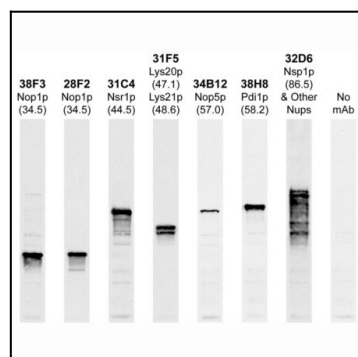


Figure-1: Western blots of whole yeast protein extracts with a collection of antibodies directed against yeast proteins. The blot for (34-1098) is in the indicated lane, 6th from the left, and the number indicates the SDS-PAGE molecular weight in kiloDaltons.