

34-1096: Monoclonal Antibody to Nuclear pore complex(Clone: 39C7)

Clonality :	Monoclonal
Clone Name :	39C7
Application :	WB
Reactivity :	Human
Format :	T.C. Sup.
Isotype :	Mouse, IgG1
Immunogen Information :	Yeast nuclear preparations

Product Info

Amount :	250 µl / 500 µl
Content :	Antibody is supplied as an aliquot of concentrated tissue culture supernatant.
Storage condition :	Store the antibody at 4°C; stable for 6 months. For long-term storage; store at -20°C. Avoid repeated freeze and thaw cycles.

Application Note

WB: 1:100, IF/ICC: 1:100-1:500 (yeast cells), 1:50-1:100 (mammalian cells).

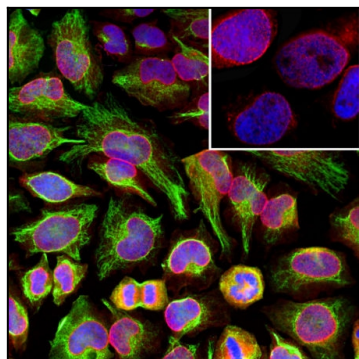


Figure-1: Immunofluorescent analysis of HeLa cells stained with panspecific mouse mAb to the nuclear pore complex (NPC), (34-1096), dilution 1:100 in red, and costained with chicken pAb to vimentin,(34-1126), dilution 1:10,000, in green. The blue is DAPI staining of nuclear DNA. The (34-1096) antibody reveals strong granular staining of the nuclei corresponding to the NPC, while the(34-1126) antibody specifically labels intermediate filaments in these cells.