

## 34-1094: Monoclonal Antibody to Nsp1p (Clone: 32D6)

<b>Clonality :</b>	Monoclonal
<b>Clone Name :</b>	32D6
<b>Application :</b>	WB, IF/ICC, IHC, IP
<b>Reactivity :</b>	Saccharomyces cerevisiae
<b>Uniprot ID :</b>	E7Q5J4
<b>Format :</b>	T.C. Sup.
<b>Isotype :</b>	Mouse, IgG3
<b>Immunogen Information :</b>	Yeast nuclear preparations

### Product Info

<b>Amount :</b>	250 µl / 500 µl
<b>Content :</b>	Antibody is supplied as an aliquot of concentrated tissue culture supernatant.
<b>Storage condition :</b>	Store the antibody at 4°C; stable for 6 months. For long-term storage; store at -20°C. Avoid repeated freeze and thaw cycles.

### Application Note

WB: 1:10,000 (cell lysates), 1:50,000 (nuclear fractions). IF/ICC and IHC: 1:1,000-1:10,000.

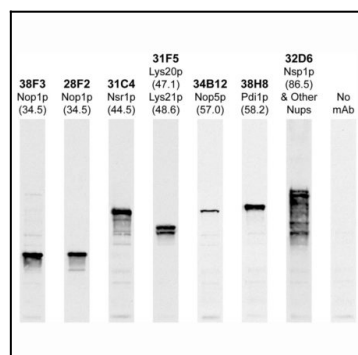


Figure-1: Western blots of whole yeast protein extracts with a collection of our antibodies. The blot for (34-1094) is in the indicated lane, and the number indicates the SDS-PAGE molecular weight in kiloDaltons.