

34-1084: Polyclonal Antibody to Neurofilament NF-L

Clonality :	Polyclonal
Application :	WB, IF/ICC, IHC
Reactivity :	Human, Rat, Mouse, Cow, Pig
Gene :	NEFL
Gene ID :	4747
Uniprot ID :	P07196
Format :	Conc. IgY prep.
Alternative Name :	68 kDa neurofilament protein, Neurofilament triplet L protein
Isotype :	Chicken, IgY
Immunogen Information :	Pig full length protein purified from spinal cord

Product Info

Amount :	50 µl / 100 µl
Content :	Antibody is supplied as an aliquot of concentrated IgY prep.
Storage condition :	Store the antibody at 4°C; stable for 6 months. For long-term storage; store at -20°C. Avoid repeated freeze and thaw cycles.

Application Note

WB: 1:5,000. IF/ICC and IHC: 1:2,000.

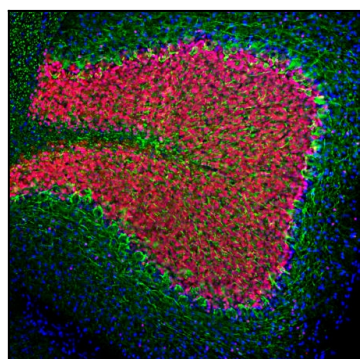


Figure-1: Immunofluorescent analysis of rat cerebellum section stained with chicken pAb to NF-L,(34-1084), dilution 1:2,000 in green, and costained with mouse mAb to FOX3/NeuN,(34-1035), dilution 1:5,000 in red. Following transcardial perfusion of rat with 4% paraformaldehyde, brain was post fixed for 24 hours, cut to 45µM, and free-floating sections were stained with above antibodies. (34-1084) antibody labels perikarya and processes of neuronal cells, particularly strongly the axons of basket cells, while the FOX3/NeuN antibody stains the nuclei and proximal cytoplasm of neurons.

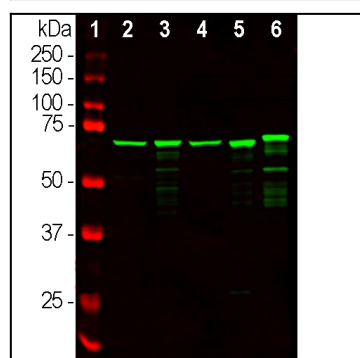


Figure-2: Western blot analysis of tissue lysates probed with chicken pAb to NF-L,(34-1084), dilution 1:20,000 in green: [1] protein standard (red), [2] rat brain, [3] rat spinal cord, [4] mouse brain, [5] mouse spinal cord and [6] cow spinal cord. Strong bands at ~68kDa corresponds to NF-L proteins which are known to have slightly different apparent SDS-PAGE molecular weights across species boundaries.