

34-1083: Polyclonal Antibody to Neurofilament NF-L

Clonality :	Polyclonal
Application :	WB IF/ICC
Reactivity :	Human, Rat, Mouse, Cow, Pig
Gene :	NEFL
Gene ID :	4747
Uniprot ID :	P07196
Format :	Sera
Alternative Name :	68 kDa neurofilament protein, Neurofilament triplet L protein
Isotype :	Rabbit, IgG
Immunogen Information :	recombinant human NF-L protein

Product Info

Amount :	50 µl / 100 µl
Content :	Antibody is supplied as an aliquot of serum
Storage condition :	Store the antibody at 4°C; stable for 6 months. For long-term storage; store at -20°C. Avoid repeated freeze and thaw cycles.

Application Note

WB: 1: 10,000-1:15,000. IF/ICC: 1:5,000.

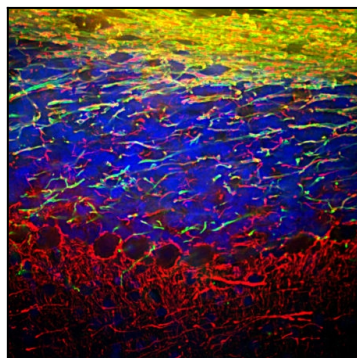


Figure-1: Immunofluorescent analysis of mouse cerebellum section stained with rabbit pAb to NF-L,(34-1083), dilution 1:5,000 in red, and costained with chicken pAb to MBP,(34-1071), dilution 1:5,000, in green. Following transcardial perfusion of mouse with 4% paraformaldehyde, brain was post fixed for 24 hours, cut to 45µM, and free-floating sections were stained with above antibodies. (34-1083) antibody labels dendrites and axons of neuronal cells, and MBP antibody stains myelin sheathes around axons.

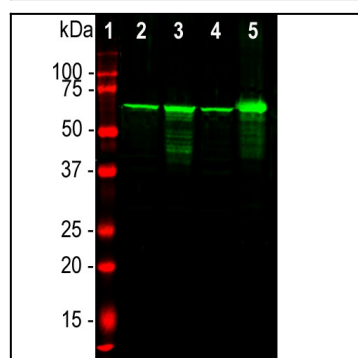


Figure-2: Western blot analysis of different tissue lysates using rabbit pAb to NF-L,(34-1083), dilution 1:20,000. in green. [1] protein standard (red), [2] rat brain, [3] rat spinal cord, [4] mouse brain, [5] mouse spinal cord. The strong band at 68kDa corresponds to the NF-L protein.