

## 34-1069: Monoclonal Antibody to Microtubule Associated Protein t, MAPT(Clone: 5B10)

<b>Clonality :</b>	Monoclonal
<b>Clone Name :</b>	5B10
<b>Application :</b>	WB, ICC/IF
<b>Reactivity :</b>	Human, Rat, Mouse
<b>Gene :</b>	MAPT
<b>Gene ID :</b>	4137
<b>Uniprot ID :</b>	P10636
<b>Format :</b>	Purified
<b>Alternative Name :</b>	Neurofibrillary tangle protein,PHF-tau,Paired helical filament-tau
<b>Isotype :</b>	Mouse, IgG1
<b>Immunogen Information :</b>	Recombinant full length version of the shortest human Tau isoform purified from E. coli.

### Product Info

<b>Amount :</b>	50 µl / 100 µl
<b>Content :</b>	Antibody is supplied as an aliquot of 1 mg/ml of affinity purified antibody
<b>Storage condition :</b>	Store the antibody at 4°C; stable for 6 months. For long-term storage; store at -20°C. Avoid repeated freeze and thaw cycles.

### Application Note

Western blot: 1:10,000. IF/ICC and IHC: 1:1,000.

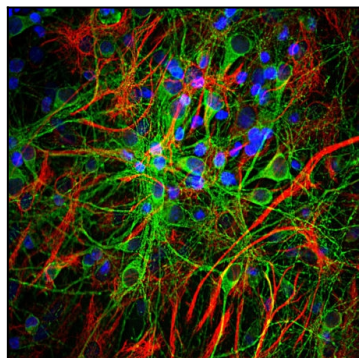


Figure-1: Immunofluorescent analysis of cortical neuron-glia culture from E20 rat stained with mouse mAb to MAPT<sub>1-181</sub>, (34-1069), dilution 1:2,000 in green, and costained with chicken pAb to GFAP,(34-1046), dilution 1:5,000 in red. The blue is DAPI staining of nuclear DNA. (34-1069) stains perikarya, dendrites and axons of neurons, while the GFAP antibody labels astrocytes.

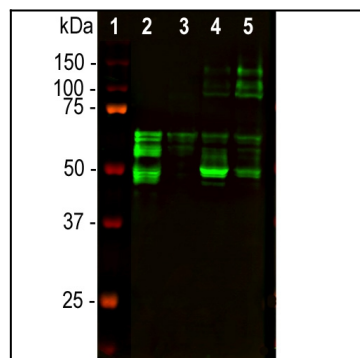


Figure-2: Western blot analysis of tissue lysates using mouse mAb to MAPT<sub>1-181</sub>, (34-1069), dilution 1:2,000 in green: [1] protein standard (red), [2] rat brain, [3] rat spinal cord, [4] mouse brain, [5] mouse spinal cord. Tau protein is expressed as up to 9 different isoforms of different molecular weight, and so appears as multiple closely spaced bands in the region of the blot from 48 kDa to 67 kDa with some higher molecular weight  $\alpha$ -big tau isoforms.