

34-1067: Polyclonal Antibody to Microtubule Associated Protein t, MAPT

Clonality :	Polyclonal
Application :	WB, IF/ICC, IHC
Reactivity :	Human, Rat, Mouse, Cow, Pig, Horse
Gene :	MAPT
Gene ID :	4137
Uniprot ID :	P10636
Format :	Conc. IgY prep.
Alternative Name :	Neurofibrillary tangle protein,PHF-tau,Paired helical filament-tau
Isotype :	Chicken, IgY
Immunogen Information :	Recombinant full length version of the shortest human Tau isoform purified from E. coli.

Product Info

Amount :	50 µl / 100 µl
Content :	Antibody is supplied as an aliquot of IgY preparation.
Storage condition :	Store the antibody at 4°C; stable for 6 months. For long-term storage; store at -20°C. Avoid repeated freeze and thaw cycles.

Application Note

WB: 1:10,000. IF/ICC and IHC: 1:1,000.

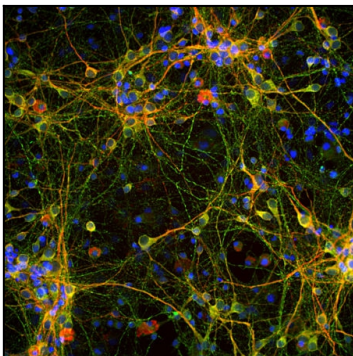


Figure-1: Immunofluorescent analysis of cortical neuron-glia culture from E20 rat stained with chicken pAb to MAP-1_{III}, (34-1067), dilution 1:2,000 in green, and costained with mouse mAb to MAP2,(34-1065), dilution 1:1,000, in red. The blue is DAPI staining of nuclear DNA. The (34-1067) antibody stains perikarya, dendrites and axons of neurons, while MAP2 antibody labels only dendrites and perikarya. As a result, perikarya and dendrites appear orange-yellow, since they contain both MAP2 and tau proteins.

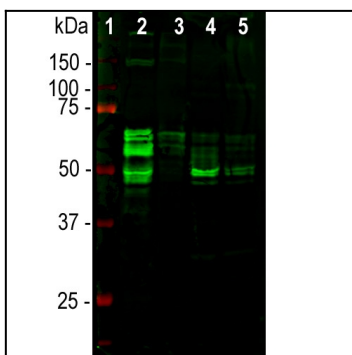


Figure-2: Western blot analysis of tissue lysates using chicken pAb to MAP-1_{III},(34-1067), dilution 1:10,000 in green: [1] protein standard (red), [2] rat brain, [3] rat spinal cord, [4] mouse brain, [5] mouse spinal cord. Tau protein is expressed as multiple isoforms of different molecular weight, and so appears as multiple closely spaced bands in the region of the blot in the range from 48 kDa to 67 kDa.