

34-1065: Monoclonal Antibody to Microtubule Associated Protein 2, MAP2A/B (Clone: 4H5)

Clonality :	Monoclonal
Clone Name :	4H5
Application :	WB
Reactivity :	Human
Gene :	MAP2
Gene ID :	4133
Uniprot ID :	P11137
Format :	Purified
Isotype :	Mouse, IgG1
Immunogen Information :	Full length purified bovine protein, epitope mapped to projection domain of human sequence, between amino acids 631 and 1056.

Product Info

Amount :	50 µl / 100 µl
Content :	Antibody is supplied as an aliquot of 1 mg/ml of affinity purified antibody.
Storage condition :	Store the antibody at 4°C; stable for 6 months. For long-term storage; store at -20°C. Avoid repeated freeze and thaw cycles.

Application Note

WB: 1:10,000. IF/ICC and IHC: 1:1,000.

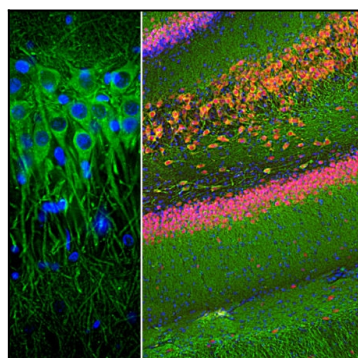


Figure-1: Immunofluorescent analysis of a rat hippocampus section stained with mouse mAb to MAP2,(34-1065), dilution 1:2,000 in green, and costained with rabbit pAb to FOX3/NeuN,(34-1036), dilution 1:2,000 in red. Following transcatheter perfusion of rat with 4% paraformaldehyde, brain was post fixed for 24 hours, cut to 45µm, and free-floating sections were stained with above antibodies. The (34-1065) antibody labels MAP2 protein in the perikarya and dendrites of most neurons while the FOX3/NeuN antibody selectively stains nuclei and proximal soma of neuronal cells.

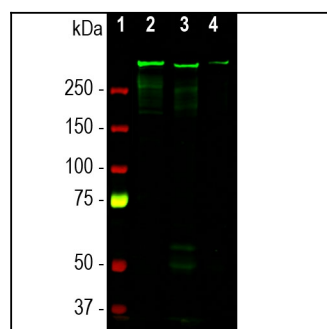


Figure-2: Western blot analysis of tissue and cell lysates using mouse mAb to MAP2,(34-1065), dilution 1:10,000 in green: [1] protein standard (red), [2] rat brain, [3] mouse brain, and [4] embryonic rat cortical neuron-glia cell lysate. A band at about 280 kDa corresponds to the MAP2A and MAP2B proteins.