

34-1063: Polyclonal Antibody to MECP2

Clonality :	Polyclonal
Application :	WB, IF/ICC, IHC
Reactivity :	Human, monkey, Rat, Mouse
Gene :	MECP2
Gene ID :	4204
Uniprot ID :	P51608
Format :	Purified
Isotype :	Rabbit, IgG
Immunogen Information :	Synthetic peptides from aa 471-486 of human MeCP2

Product Info

Amount :	50 µl / 100 µl
Content :	Antibody is supplied as an aliquot of 1 mg/ml of affinity purified antibody
Storage condition :	Store the antibody at 4°C; stable for 6 months. For long-term storage; store at -20°C. Avoid repeated freeze and thaw cycles.

Application Note

WB: 1:10,000-1:20,000 IF/ICC or IHC: 1:2,000

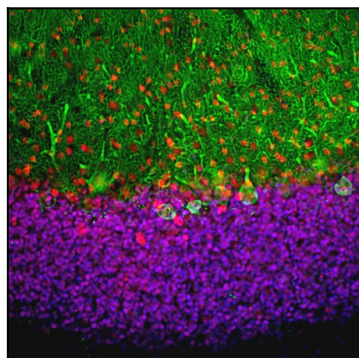


Figure-1: Immunofluorescent analysis of rat cerebellum section costained with rabbit pAb to MeCP2,(34-1063), dilution 1:5,000, in red, and chicken pAb to calbindin,(34-1020), dilution 1:2,000, in green. Blue is DAPI staining of nuclear DNA. Following transcardial perfusion with 4% paraformaldehyde, brain was post fixed for 24 hours, cut to 45µM, and free-floating sections were stained with above antibodies. The MeCP2 antibody selectively stains nuclei of neuronal cells to a variable degree. Calbindin, often used as Purkinje cell marker, is prominently expressed in dendrites and perikarya of these cells in the cerebellar molecular layer.

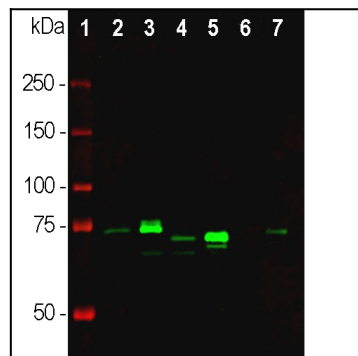


Figure-2: Western blot analysis of tissue and cell lysates using rabbit pAb to MeCP2,(34-1063), dilution 1:20,000 in green: [1] protein standard (red), [2] Rat whole brain, [3] nuclear fraction of rat brain, [4] mouse whole brain, [5] nuclear fraction of mouse brain, [6] HeLa cells, [7] C6 cells. Major band at about 70-75 kDa corresponds to MeCP2 protein, predominantly detected in the nuclear fraction of the lysates. The apparent molecular weights of MeCP2 based on SDS-PAGE mobility are variable between species and higher than the actual MeCP2 molecular weight which is ~54kDa