

34-1061: Monoclonal Antibody to Lamp1 (Clone: 6E2)(Discontinued)

Clonality :	Monoclonal
Clone Name :	6E2
Application :	IHC,WB
Reactivity :	Pig,Rat,Mouse,Human,Bovine
Gene :	LAMP1
Gene ID :	3916
Uniprot ID :	P11279
Format :	Purified
Alternative Name :	CD107 antigen-like family member A
Isotype :	Mouse, IgG1
Immunogen Information :	Full length human Lamp1 purified from E. coli

Product Info

Amount :	100 μ l
Content :	Antibody is supplied as an aliquot of 1.6 mg/ml of affinity purified antibody.
Storage condition :	Store the antibody at 4°C; stable for 6 months. For long-term storage; store at -20°C. Avoid repeated freeze and thaw cycles.

Application Note

Western blot: 1:5,000. ICC/IF and IHC: 1:500.

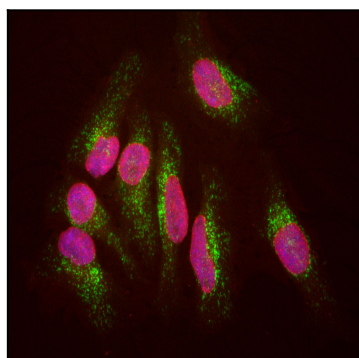


Figure 1: HeLa cells staining with 34-1061 (green), and counterstained with chicken polyclonal antibody to Lamin A/C, 34-1057 (red) and DNA (blue). The 34-1061 antibody reveals strong cytoplasmic staining of lysosomes and early endosomes, while the Lamin A/C antibody binds to the nuclear lamina. Since both DNA (blue) and Lamin A/C (red) are associated with the nuclear compartment, this region appears crimson in this image.

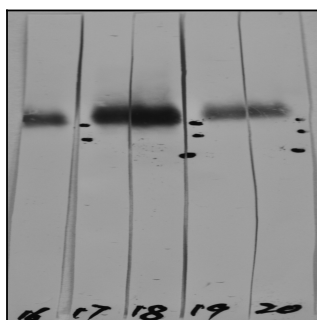


Figure 2: Western strip blots of HeLa cell crude extracts with two different preparations of 34-1061 in strips 17 and 18. Both preparations bind to a diffuse band running at between ~90 kDa and ~120 kDa as expected, and show no appreciably cross reactivity with any other protein.