

34-1060: Monoclonal Antibody to Lamp1 (Clone: 5H6)

Clonality :	Monoclonal
Clone Name :	5H6
Application :	WB, IF/ICC, IHC
Reactivity :	Human specific
Gene :	LAMP1
Gene ID :	3916
Uniprot ID :	P11279
Format :	Purified
Alternative Name :	CD107 antigen-like family member A
Isotype :	Mouse, IgG1
Immunogen Information :	Full length human Lamp1 purified from E. coli

Product Info

Amount :	50 µl / 100 µl
Content :	Antibody is supplied as an aliquot of 1 mg/ml of affinity purified antibody or concentrated tissue culture supernatant.
Storage condition :	Store the antibody at 4°C; stable for 6 months. For long-term storage; store at -20°C. Avoid repeated freeze and thaw cycles.

Application Note

WB: 1:10,000. IF/ICC and IHC: 1:2,000.

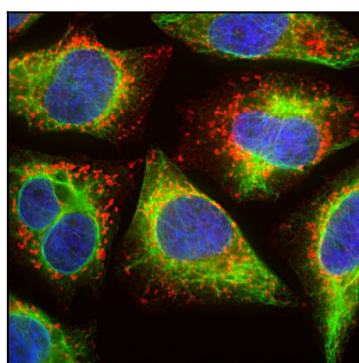


Figure-1: Immunofluorescent analysis of HeLa cells stained with mouse mAb to LAMP1,(34-1060), dilution 1:500 in red, and costained with chicken pAb to vimentin,(34-1126), dilution 1:10,000, in green. The blue is DAPI staining of nuclear DNA. The cells were treated with 50µM of chloroquine, an inhibitor of autophagy, for 16 hours prior to staining. The (34-1060) antibody reveals vesicular staining of LAMP1 protein accumulated in swollen lysosomes, while the(34-1126) antibody specifically labels the intermediate filament network in these cells.

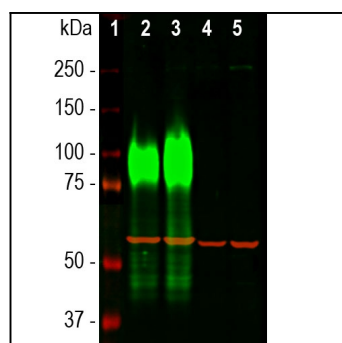


Figure-2: Western blot analysis of different cell lysates using mouse mAb to LAMP1,(34-1060) dilution 1:10,000 in green. Cells were maintained under normal conditions (Ct), or treated with 50µM of chloroquine (CQ), an inhibitor of autophagy, for 24 hours: [1] protein standard (red), [2] HeLa Ct, [3] HeLa+CQ, [4] NIH-3T3 Ct, and [5] NIH-3T3+CQ. The smeared band between 75-120kDa corresponds to variably glycosylated forms of the LAMP1 protein detected only in the human cells, this antibody does not recognize the rodent LAMP1 homologue. The same blot was probed with chicken pAb to HSP60, dilution 1:20,000. The HSP60 antibody reveals heat shock 60 protein with apparent molecular weight of 60kDa in all preparations.