

### 34-1059: Polyclonal Antibody to Lamin A/C (Discontinued)

<b>Clonality :</b>	Polyclonal
<b>Application :</b>	WB,IF/ICC,IHC
<b>Reactivity :</b>	Human,Bovine,Pig,Mouse,Rat
<b>Gene :</b>	LMNA
<b>Gene ID :</b>	4000
<b>Uniprot ID :</b>	P02545
<b>Format :</b>	Sera
<b>Alternative Name :</b>	70 kDa lamin, Renal carcinoma antigen NY-REN-32, LMN1
<b>Isotype :</b>	Rabbit, IgG
<b>Immunogen Information :</b>	Full length recombinant human Lamin A purified from E. coli

#### Product Info

<b>Amount :</b>	100 µl
<b>Content :</b>	Antibody is supplied as an aliquot of serum
<b>Storage condition :</b>	Store the antibody at 4°C; stable for 6 months. For long-term storage; store at -20°C. Avoid repeated freeze and thaw cycles.

#### Application Note

Western blot: 1:5,000 IF/ICC and IHC: 1:5,000

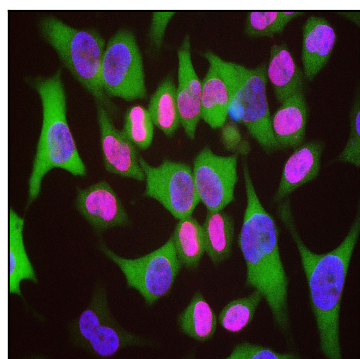


Figure 1: HeLa cells staining with 34-1059 (red) counterstained with monoclonal antibody to HSP27, 34-1050 (green) and DNA (blue). The 34-1059 antibody reveals strong nuclear lamina staining, while the 34-1050 antibody reveals strong cytoplasmic staining. Since both DNA (blue) and Lamin A/C (red) are associated with the nuclear compartment, this region appears crimson in this image.

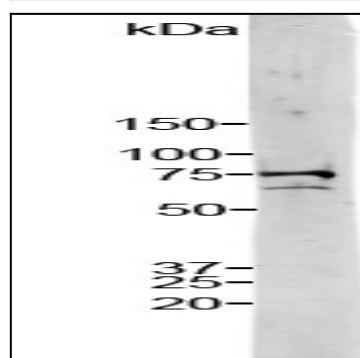


Figure 2: Strip blot of crude HeLa cell extract stained with 34-1059 . Note two strong and clean bands at 74 kDa and 65 kDa, corresponding to Lamin A and C.