

34-1058: Monoclonal Antibody to Lamin A/C (Clone: 4C4)

Clonality :	Monoclonal
Clone Name :	4C4
Application :	WB, IF/ICC
Reactivity :	Human, unreactive with rodent
Gene :	LMNA
Gene ID :	4000
Uniprot ID :	P02545
Format :	Purified
Alternative Name :	70 kDa lamin, Renal carcinoma antigen NY-REN-32, LMN1
Isotype :	Mouse, IgG1
Immunogen Information :	Full length human Lamin A purified form E. coli.

Product Info

Amount :	50 µl / 100 µl
Content :	Antibody is supplied as an aliquot of 1 mg/ml of affinity purified antibody.
Storage condition :	Store the antibody at 4°C; stable for 6 months. For long-term storage; store at -20°C. Avoid repeated freeze and thaw cycles.

Application Note

WB: 1:1,000-1:2,000. IF/ICC 1:1,000

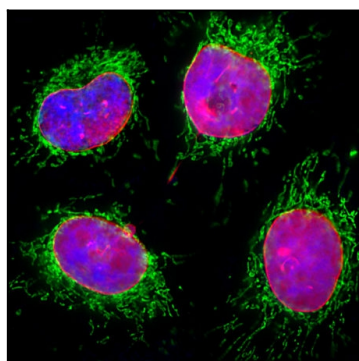


Figure-1: Immunofluorescent analysis of HeLa cells stained with mouse mAb to lamin A/C,(34-1058), dilution 1:2,000 in red, and costained with rabbit pAb to HSP60, dilution 1:5,000, in green. The blue is Hoechst staining of nuclear DNA. (34-1058) antibody specifically labels the nuclear lamina, while the rabbit pAb to HSP60 antibody reveals protein expressed in mitochondria.

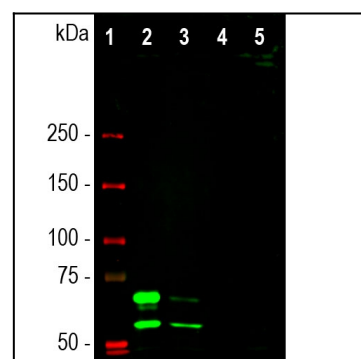


Figure-2: Western blot analysis of different cell lysates using mouse mAb to lamin A/C,(34-1058), dilution 1:1,000 in green: [1] protein standard (red), [2] HeLa, [3] HEK293 [4] C6, and [5] NIH-3T3 cell lysates. Two strong bands at 74 and 65kDa correspond to the lamin A and lamin C proteins respectively, detected only in the cells of human origin. (34-1058) antibody failed to recognize rat or mouse proteins.