

34-1056: Monoclonal Antibody to Lys20p and Lys21p (Clone: 31F5)

Clonality :	Monoclonal
Clone Name :	31F5
Application :	WB, IF/ICC, IHC
Reactivity :	Saccharomyces cerevisiae
Uniprot ID :	E7Q1J2
Format :	T.C. Sup.
Isotype :	Mouse, IgG1

Immunogen Information : Generated from sequence of yeast Lys20p (top) and Lys21p (bottom) with the SMART program from EMBL in Heidelberg. The block marked "PFAM HMGL-like" corresponds to the Hydroxymethylglutaryl-CoA lyase (HMGL) like domain which is found in a diverse set of enzymes including various aldolases, pyruvate carboxylases and homocitrate synthases.

Product Info

Amount :	250 µl / 500 µl
Content :	Antibody is supplied as an aliquot of concentrated tissue culture supernatant.
Storage condition :	Store the antibody at 4°C; stable for 6 months. For long-term storage; store at -20°C. Avoid repeated freeze and thaw cycles.

Application Note

WB: 1:10,000-1:50,000. ICC/IF and IHC: 1:1,000-1:10,000.

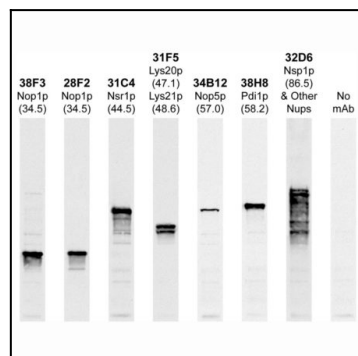


Figure-1: Western blots of whole yeast protein extracts with a collection of our antibodies. The blot for (34-1056) is in the indicated lane, and the number indicates the SDS-PAGE molecular weight in kiloDaltons.