

34-1051: Monoclonal Antibody to High mobility group box 1, Amphoterin, HMGB1(Clone: 1F3)

Clonality :	Monoclonal
Clone Name :	1F3
Application :	WB, IF/ICC, IHC
Reactivity :	Human, Rat, Mouse
Gene :	HMGB1
Gene ID :	3146
Uniprot ID :	P09429
Format :	Purified
Alternative Name :	High mobility group protein 1
Isotype :	Mouse, IgG2b
Immunogen Information :	Human full length protein expressed and purified form E. coli

Product Info

Amount :	50 µl / 100 µl
Content :	Antibody is supplied as an aliquot of 3 mg/ml of affinity purified antibody or concentrated tissue culture supernatant.
Storage condition :	Store the antibody at 4°C; stable for 6 months. For long-term storage; store at -20°C. Avoid repeated freeze and thaw cycles.

Application Note

WB: 1:1,000-1:2,000. ICC/IF and IHC: 1:1,000

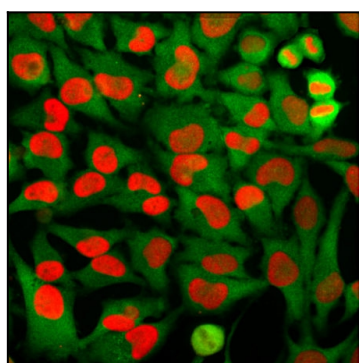


Figure-1: Immunofluorescent analysis of of HeLa cells stained with mouse mAb to HMGB1,(34-1051), dilution 1:2,000 in red and costained with rabbit pAb to GAPDH, (34-1048), dilution 1:2,000 in green. (34-1051) antibody stains the chromatin binding protein HMGB1, which is localized in the nuclei. In contrast the (34-1048) antibody produces strong cytoplasmic staining of cells.

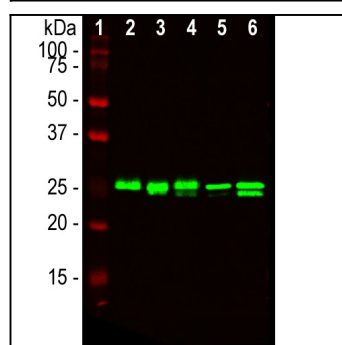


Figure-2: Western blot analysis of lysates from different cell lines probed with mouse mAb to high mobility group protein B1, (HMGB1),(34-1051), dilution 1:2,000: [1] protein standard, [2] NIH-3T3, [3] C6, [4] HEK293, [5] HeLa, and [6] SH-SY5Y. The 25kDa band revealed by (34-1051) antibody corresponds to the HMGB1 protein.