

## 34-1050: Monoclonal Antibody to Heat shock protein 27, HSP27(Clone: 6H11)

<b>Clonality :</b>	Monoclonal
<b>Clone Name :</b>	6H11
<b>Application :</b>	WB, ICC/IF, IHC
<b>Reactivity :</b>	Human, unreactive on rodent
<b>Gene :</b>	HSPB1
<b>Gene ID :</b>	3315
<b>Uniprot ID :</b>	P04792
<b>Format :</b>	Purified
<b>Alternative Name :</b>	28 kDa heat shock protein, Estrogen-regulated 24 kDa protein, HSP 27, Heat shock 27 kDa protein, SRP27, Stress-responsive protein 27
<b>Isotype :</b>	Mouse, IgG1
<b>Immunogen Information :</b>	Recombinant full length purified HSP27 from E. coli.

### Product Info

<b>Amount :</b>	50 µl / 100 µl
<b>Content :</b>	Antibody is supplied as an aliquot of 1 mg/ml of affinity purified antibody or concentrated tissue culture supernatant.
<b>Storage condition :</b>	Store the antibody at 4°C; stable for 6 months. For long-term storage; store at -20°C. Avoid repeated freeze and thaw cycles.

### Application Note

WB: 1:10,000. IF/ICC and IHC: 1:1,000.

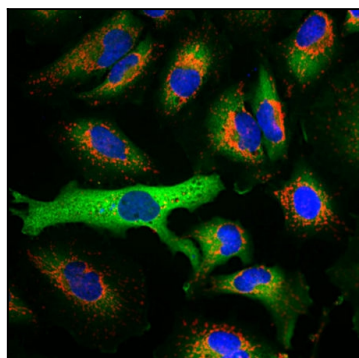


Figure-1: Immunofluorescent analysis of HeLa cells stained with mouse mAb to HSP27,(34-1050), dilution 1:2,000 in green, and costained with chicken pAb to HSP60, dilution 1:2,000 in red. Blue is DAPI staining of nuclear DNA. The (34-1050) antibody produces strong cytoplasm staining, while the HSP60 antibody specifically labels mitochondria.

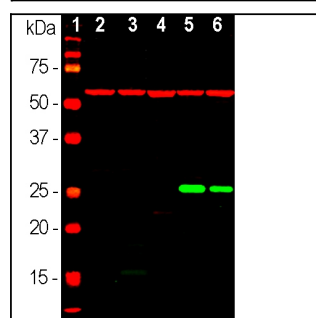


Figure-2: Western blot analysis of different tissue or whole cell lysates using mouse mAb to HSP27,(34-1050), dilution 1:10,000, in green. [1] protein standard (red), [2] rat brain, [3] mouse brain, [4] NIH-3T3, [5] HEK293, [6] HeLa, [7] SH-SY5Y cells. Strong single band at ~27kDa corresponds to HSP27 protein, detected only in human cell lines, since this antibody is human specific. The blot was simultaneously probed with rabbit pAb to HSP60, dilution 1:5,000 in red. A strong 60kDa band is present in all preparations.