

34-1049: Polyclonal Antibody to Heat shock protein 27, HSP27

Clonality :	Polyclonal
Application :	WB, IF/ICC, IHC
Reactivity :	Human, unreactive with rodent
Gene :	HSBP1
Gene ID :	3315
Uniprot ID :	P04792
Format :	Conc. IgY prep.
Alternative Name :	28 kDa heat shock protein, Estrogen-regulated 24 kDa protein, HSP 27, Heat shock 27 kDa protein, SRP27, Stress-responsive protein 27
Isotype :	Chicken, IgY
Immunogen Information :	Recombinant full length purified HSP27 from E. coli

Product Info

Amount :	50 µl / 100 µl
Content :	Antibody is supplied as an aliquot of concentrated IgY preparation.
Storage condition :	Store the antibody at 4°C; stable for 6 months. For long-term storage; store at -20°C. Avoid repeated freeze and thaw cycles.

Application Note

WB: 1:2,000-5,000. IF/ICC and IHC:1:1,000

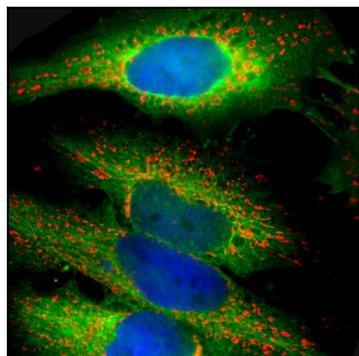


Figure-1: Immunofluorescent analysis of HeLa cells stained with chicken pAb to HSP27,(34-1049), dilution 1:1,000 in green, and costained with mouse mAb to HSP60, dilution 1:5,000 in red. Blue is DAPI staining of nuclear DNA. The (34-1049) antibody produces strong cytoplasmic staining, while the HSP60 antibody specifically labels mitochondria.

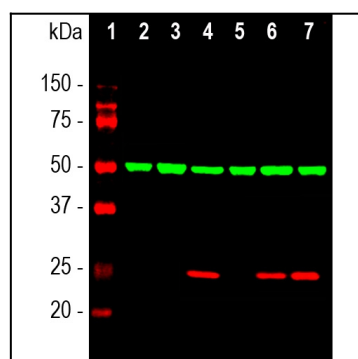


Figure-2: Western blot analysis of whole cell lysates using chicken pAb to HSP27,(34-1049), dilution 1:2,000, in red. [1] protein standard (red), [2] NIH-3T3 , [3] C6, [4] HeLa, [5] HEK293, [6] SH-SY5Y, and [7] COS-1 cells. Strong single band at 27kDa corresponds to the HSP27 protein strongly expressed in human cell lines. Note that the antibody does not recognize rodent HSP27. The blot was simultaneously probed with mouse mAb to ̳-tubulin,(34-1116), dilution 1:10,000 in green. A single band at 50kDa, which is detected in all cell lysates, corresponds to the ̳-tubulin proteins.