

34-1048: Polyclonal Antibody to Glyceraldehyde 3-Phosphate Dehydrogenase

Clonality :	Polyclonal
Application :	WB, IF/ICC, IHC
Reactivity :	Human, Rat, Mouse, Cow, Pig, Horse, Chicken
Gene :	GAPDH
Gene ID :	2597
Uniprot ID :	P04406
Format :	Sera
Alternative Name :	Peptidyl-cysteine S-nitrosylase GAPDH
Isotype :	Rabbit, IgG
Immunogen Information :	Native porcine purified protein

Product Info

Amount :	50 µl / 100 µl
Content :	Antibody is supplied as an aliquot of serum
Storage condition :	Store the antibody at 4°C; stable for 6 months. For long-term storage; store at -20°C. Avoid repeated freeze and thaw cycles.

Application Note

WB: 1:30,000 IF/ICC and IHC: 1:2,000

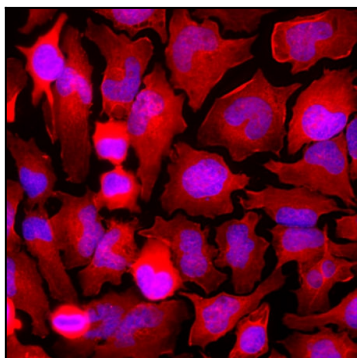


Figure-1: Immunofluorescent analysis of HeLa cells stained with rabbit pAb to GAPDH,(34-1048), dilution 1:2,000 in red. Blue is Hoescht staining of nuclear DNA. The (34-1048) antibody produces diffuse cytoplasmic staining of cells.

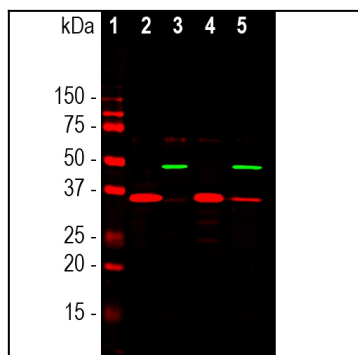


Figure-2: Western blot analysis of different cell cytosolic or nuclear enriched fractions, using rabbit pAb to GAPDH,(34-1048), dilution 1:20,000, in red: [1] protein standard, [2] NIH-3T3 cytosolic, [3] NIH-3T3 nuclear, [4] HeLa cytosolic, and [5] HeLa nuclear fractions. Strong band at 37kDa corresponds to GAPDH protein, mainly detected in the cytosolic fractions. The same blot was simultaneously probed with mouse mAb to the nuclear RNA binding protein SF3B4,(34-1113), dilution 1:1,000, in green. In contrast to GAPDH, SF3B4 is exclusively expressed in the nuclear fraction.