

## 34-1026: Polyclonal Antibody to Coronin 1a

<b>Clonality :</b>	Polyclonal
<b>Application :</b>	WB, IF/ICC
<b>Reactivity :</b>	Human, Rat, Mouse, Cow, Pig
<b>Gene :</b>	CORO1A
<b>Gene ID :</b>	11151
<b>Uniprot ID :</b>	P31146
<b>Format :</b>	Sera
<b>Alternative Name :</b>	Coronin-like protein A, Coronin-like protein p57, TACO, Tryptophan aspartate-containing coat protein
<b>Isotype :</b>	Rabbit, IgG
<b>Immunogen Information :</b>	Full length recombinant protein

### Product Info

<b>Amount :</b>	50 µl / 100 µl
<b>Content :</b>	Antibody is supplied as an aliquot of 1 mg/ml of affinity purified antibody or serum
<b>Storage condition :</b>	Store the antibody at 4°C; stable for 6 months. For long-term storage; store at -20°C. Avoid repeated freeze and thaw cycles.

### Application Note

WB: 1:5,000, IF/ICC: 1:500-1:1,000

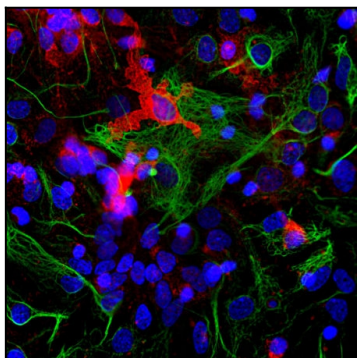


Figure-1: Immunofluorescent analysis of cortical neuron-glia cell culture from E20 rat stained with rabbit pAb to coronin 1a, (34-1026), dilution 1:1,000 in red, and costained with mouse mAb to GFAP, dilution 1:1,000 in green. The blue is Hoechst staining of nuclear DNA. The coronin 1a antibody labels protein expressed in the cytoplasm of microglia cells, while GFAP antibody stains intermediate filaments in astrocytic cells.

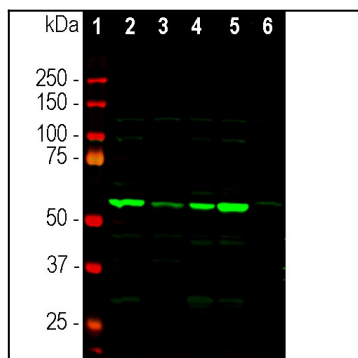


Figure-2: Western blot analysis of tissue lysates using rabbit pAb to coronin 1a, (34-1026), dilution 1:5,000: [1] protein standard, [2] mouse brain, [3] rat brain, [4] cow cerebellum, [5] cow cortex, and [6] pig spinal cord. The strong single band about 55kDa corresponds to the coronin 1a protein.