

34-1025: Monoclonal Antibody to Cherry Dsred (Clone: 1C51)

Clonality :	Monoclonal
Clone Name :	1C51
Application :	WB, IF/ICC, IHC
Uniprot ID :	X5DSL3
Format :	Purified
Isotype :	Mouse, IgG2a
Immunogen Information :	Full length recombinant protein

Product Info

Amount :	50 µl / 100 µl
Content :	Antibody is supplied as an aliquot of 1 mg/ml of affinity purified antibody.
Storage condition :	Store the antibody at 4°C; stable for 6 months. For long-term storage; store at -20°C. Avoid repeated freeze and thaw cycles.

Application Note

WB: 1:2,000 IF/IHC: 1:500.

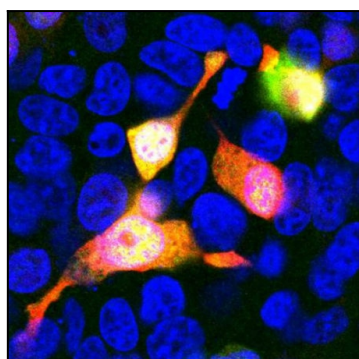


Figure-1: Immunofluorescent analysis of HEK293 cells transfected with mCherry-HA, construct, in red, and stained with mouse mAb to mCherry, (34-1025), dilution 1:500, in green. The blue is Hoechst staining of nuclear DNA. (34-1025) antibody reveals mCherry protein expressed only in transfected cells which appear golden in color. Untransfected cells do not react with the antibody, as a result only their nuclei are visible.

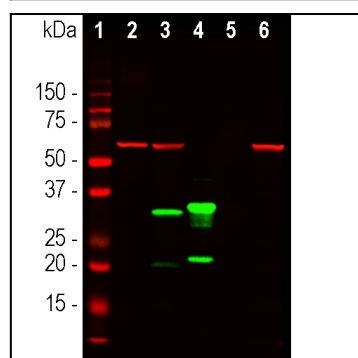


Figure-2: Western blot analysis of HEK293 cell lysates, and recombinant protein solutions using mouse mAb to mCherry, (34-1025), dilution 1:1,000, in green [1] protein standard, [2] HEK293, [3] HEK293 cells transfected with mCherry-HA construct, [4] mCherry recombinant protein, [5] GFP recombinant protein, and [6] HEK293 transfected with GFP construct. Major band at about 30kDa corresponds to mCherry protein. (34-1025) antibody does not react with GFP protein. The same blot was simultaneously probed with chicken pAb to HSP60, dilution 1:5,000 in red which reveals band at 60kDa seen only in cell lysates.