

34-1022: Polyclonal Antibody to Casein Kinase 1 Alpha(Discontinued)

Clonality :	Polyclonal
Application :	IHC,WB
Reactivity :	Pig,Rat,Mouse,Human,Bovine
Gene :	CSNK1A1
Gene ID :	1452
Uniprot ID :	P48729
Format :	Conc. IgY prep.
Alternative Name :	CK1
Isotype :	Chicken, IgY
Immunogen Information :	Recombinant full length CK1a (shortest isoform)

Product Info

Amount :	100 μ l
Content :	Antibody is supplied as an aliquot of concentrated IgY preparation.
Storage condition :	Store the antibody at 4°C; stable for 6 months. For long-term storage; store at -20°C. Avoid repeated freeze and thaw cycles.

Application Note

Western blot: 1:10,000 IF: 1:500-1:1000 ABC: 1:5,000

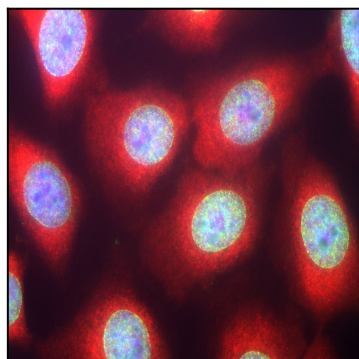


Figure 1: High power image of HeLa cells stained with chicken casein kinase 1 alpha antibody (red) and our panspecific mouse monoclonal antibody to nuclear pore complexes 34-1096 (green). Casein kinase 1 alpha has a particulate distribution both in the nucleus and the cytoplasm. Blue is the Hoechst DNA stain. High quality immunocytochemical images made using this antibody are shown in reference 4.

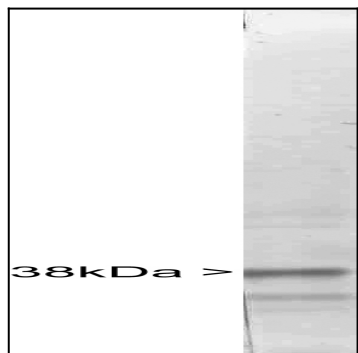


Figure 2: Western blot of whole rat spinal cord homogenate stained with 34-1022, at dilution of 1:10,000. A prominent band running with an apparent SDS-PAGE molecular weight of ~38kDa and a less prominent band at ~34kDa corresponds to other CK1 alpha isotypes.