

34-1018: Monoclonal Antibody to Calbindin(Clone: 4H7)

| | |
|--------------------------------|---|
| Clonality : | Monoclonal |
| Clone Name : | 4H7 |
| Application : | WB |
| Reactivity : | Human |
| Gene : | CALB1 |
| Gene ID : | 793 |
| Uniprot ID : | P05937 |
| Format : | Purified |
| Alternative Name : | Calbindin D28,D-28K,Vitamin D-dependent calcium-binding protein, avian-type |
| Isotype : | Mouse, IgG1 |
| Immunogen Information : | Full-length recombinant human protein |

Product Info

| | |
|----------------------------|---|
| Amount : | 50 μ l / 100 μ l |
| Content : | Antibody is supplied as an aliquot of 1 mg/ml of affinity purified antibody |
| Storage condition : | Store the antibody at 4°C; stable for 6 months. For long-term storage; store at -20°C. Avoid repeated freeze and thaw cycles. |

Application Note

WB: 1:1,000-1:5,000. IF/ICC or IHC: 1:1,000.

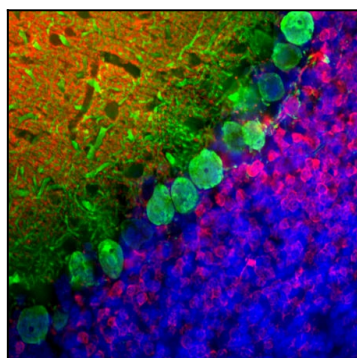


Figure-1: Immunofluorescent analysis of rat brain cerebellum section stained with mouse mAb to calbindin,(34-1018), dilution 1:1,000, in green, and costained with rabbit pAb to calretinin, dilution 1:5,000 in red. The blue is DAPI staining of nuclear DNA Following transcardial perfusion with 4% paraformaldehyde, brain was post fixed for 24 hours, cut to 45 μ m, and free-floating sections were stained with the above antibodies. Calbindin antibody prominently labels the dendrites and perikarya of Purkinje cells in the molecular layer of cerebellum. In contrast the calretinin antibody stains granule cells, in the granular layer, and their processes in the molecular layer.

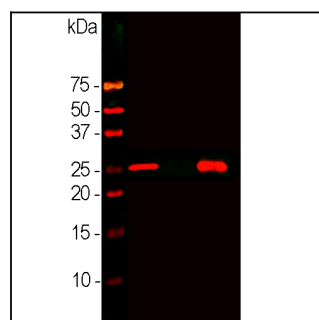


Figure-2: Western blot analysis of different neuronal tissue lysates using mouse mAb to calbindin,(34-1018), dilution 1:2,000: [1] protein standard, [2] rat cerebellum, [3] pig hippocampus, and [4] cow cerebellum. Band at ~25 kDa corresponds to calbindin protein, heavily expressed in the cerebellum but less in hippocampus.