

## 34-1008: Monoclonal Antibody to Aldolase C: N terminal (Clone: 4A9)

<b>Clonality :</b>	Monoclonal
<b>Clone Name :</b>	4A9
<b>Application :</b>	WB, IIF/ICC, IHC
<b>Reactivity :</b>	Human, Rat, Mouse, Cow, Pig
<b>Gene :</b>	ALDOC
<b>Gene ID :</b>	230
<b>Uniprot ID :</b>	P09972
<b>Format :</b>	Purified
<b>Alternative Name :</b>	Brain-type aldolase
<b>Isotype :</b>	Mouse, IgG1
<b>Immunogen Information :</b>	N-terminal sequence MPHSYPALSAEQKKELESDIA

### Product Info

<b>Amount :</b>	50 µl / 100 µl
<b>Content :</b>	Antibody is supplied as an aliquot of 1 mg/ml of affinity purified antibody.
<b>Storage condition :</b>	Store the antibody at 4°C; stable for 6 months. For long-term storage; store at -20°C. Avoid repeated freeze and thaw cycles.

### Application Note

WB: 1:2,000. IF/ICC or IHC: 1:1,000.

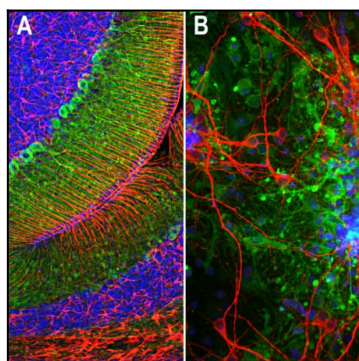


Figure-1: A. Immunofluorescence of rat cerebellum section stained with mouse mAb to aldolase C, (34-1008), dilution 1:1,000, in green, and costained with rabbit pAb to GFAP,(34-1042), dilution 1:5,000 in red. The blue is Hoechst staining of nuclear DNA. Aldolase C antibody selectively labels the perikarya and dendrites of Purkinje cells, while GFAP antibody stains processes of Bergman glia and astrocytic cells.

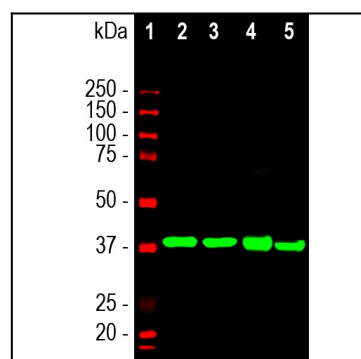


Figure-2: Western blot analysis of different tissue lysates using mouse mAb to aldolase C,(34-1008), dilution 1:2,000 in green: [1] protein standard (in red), [2] rat brain, [3] mouse brain, [4] cow cerebellum, and [5] pig hippocampus. The single strong band at about 40kDa corresponds to Aldolase C protein.