

34-1006: Polyclonal Antibody to Aldehyde dehydrogenase H1L1, ALDH1L1

Clonality :	Polyclonal
Application :	WB
Reactivity :	Human
Gene :	ALDH1L1
Gene ID :	10840
Uniprot ID :	O75891
Format :	Sera
Alternative Name :	Aldehyde dehydrogenase family 1 member L1
Isotype :	Rabbit, IgG
Immunogen Information :	Full length human protein

Product Info

Amount :	50 μ l / 100 μ l
Content :	Antibody is supplied as an aliquot of serum.
Storage condition :	Store the antibody at 4°C; stable for 6 months. For long-term storage; store at -20°C. Avoid repeated freeze and thaw cycles.

Application Note

WB: 1:2,000-5,000. IF/IHC: 1:1,000.

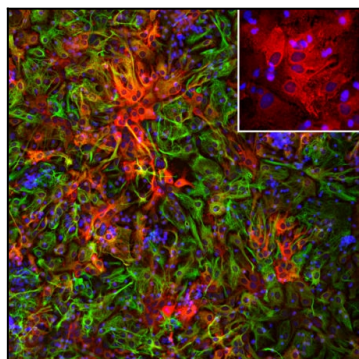


Figure-1: Immunofluorescent analysis of cortical neuron-glia cell culture from E20 rat stained with rabbit pAb to ALDH1L1, (34-1006), dilution 1:1,000 in red, and costained with chicken pAb to GFAP,(34-1046), dilution 1:5,000 in green. The blue is DAPI staining of nuclear DNA. The ALDH1L1 antibody labels protein expressed in the cytoplasm of non-neuronal cells. The GFAP antibody stains intermediate filaments in astrocytes and other glial cells.

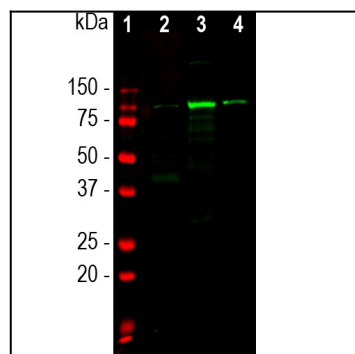


Figure-2: Western blot analysis of different tissue lysates using rabbit pAb to ALDH1L1,(34-1006), dilution 1:5,000 in green: [1] protein standard (red), [2] rat brain, [3] rat liver and [4] rat kidney. The single band at 100kDa mark corresponds to the ALDH1L1 protein.