

## 34-1002: Monoclonal Antibody to Actin, pan-specific (Clone: 5J11)

<b>Clonality :</b>	Monoclonal
<b>Clone Name :</b>	5J11
<b>Application :</b>	WB, IF/ICC, IHC.
<b>Reactivity :</b>	Human, Rat, Mouse, Cow, Pig, Horse
<b>Gene :</b>	ACTA
<b>Gene ID :</b>	58
<b>Uniprot ID :</b>	P68133
<b>Format :</b>	Purified
<b>Alternative Name :</b>	Alpha-actin-1
<b>Isotype :</b>	Mouse, IgG1
<b>Immunogen Information :</b>	Actin preparation derived from bovine brain

### Product Info

<b>Amount :</b>	50 $\mu$ L / 100 $\mu$ L
<b>Content :</b>	Supplied as an aliquot of affinity purified antibody at 1mg/ml in PBS, 50% glycerol, 5mM Na <sub>3</sub> N
<b>Storage condition :</b>	Store the antibody at 4°C; stable for 6 months. For long-term storage; store at -20°C. Avoid repeated freeze and thaw cycles.

### Application Note

WB: 1:1,000. IF/ICC or IHC: 1:500-1,000.

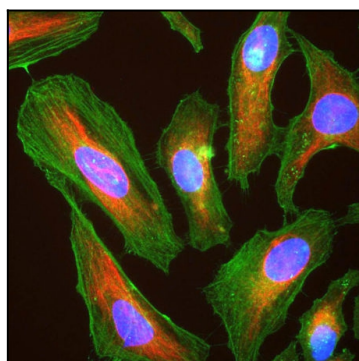


Figure-1: Immunofluorescent analysis of HeLa cells stained with mAb against actin,(34-1002), in green, costained with chicken pAb against vimentin,(34-1126), in red. The actin antibody labels the submembranous actin-rich cytoskeleton, stress fibers and bundles of actin associated with cell adhesion sites. The vimentin antibody stains a different cytoskeletal network, the intermediate or 10nm filaments. The blue is DAPI staining of nuclear DNA.

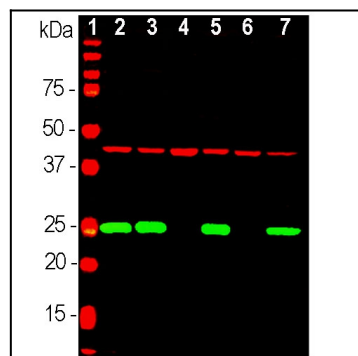


Figure-2: Western blot analysis of tissue and cell lysates probed with mouse mAb against actin,(34-1002), in red. [1] protein standard, [2] rat brain, [3] mouse brain, [4] NIH-3T3, [5] HEK293, [6] HeLa, [7] SH-SY5Y cells. The same blot was simultaneously probed with chicken pAb to UCHL-1, a marker of neuronal lineage cells, in green.