

34-1001: Monoclonal Antibody to 14-3-3 Eta (14-3-3 Eta)(Clone: 3G12)

Clonality :	Monoclonal
Clone Name :	3G12
Application :	WB, IF/ICC, IHC
Reactivity :	Human, Rat, Mouse, Cow, Horse, Dog
Gene :	YWHAH
Gene ID :	7533
Uniprot ID :	Q04917
Format :	Purified
Alternative Name :	Protein AS1
Isotype :	Mouse, IgG1
Immunogen Information :	Full length human recombinant human protein

Product Info

Amount :	50 µl / 100 µl
Content :	Supplied as an aliquot of affinity purified antibody at 1mg/ml in PBS, 50% glycerol, 5mM NaN ₃
Storage condition :	Store the antibody at 4°C; stable for 6 months. For long-term storage; store at -20°C. Avoid repeated freeze and thaw cycles.

Application Note

WB: 1:5,000. IF/ICC and IHC: 1:1,000.

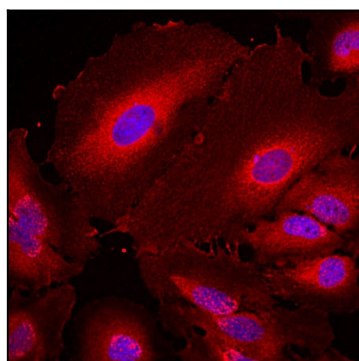


Figure-1: Immunofluorescent analysis of HeLa cells stained with mouse mAb to 14-3-3 η , (34-1001), dilution 1:1,000 in red. Blue is DAPI staining of nuclear DNA. The (34-1001) antibody reveals the diffuse cytoplasmic distribution of 14-3-3 η protein with higher concentration in the perinuclear region.

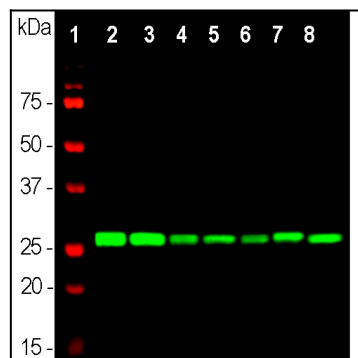


Figure-2: Western blot analysis of whole brain lysates (lanes 2,3) and cell lysates (lanes 4-8), using mouse mAb to 14-3-3 η , (34-1001), dilution 1:5,000 in green: [1] protein standard (red), [2] rat brain, [3] mouse brain, [4] NIH-3T3, [5] HEK293, [6] HeLa, [7] SH-SY5Y, [8] C6 cells. Strong band at 28kDa corresponds to 14-3-3 η protein, expressed in all preparations.